

Product datasheet for **TA320126**

Prickle 2 (PRICKLE2) Rabbit Polyclonal Antibody

Product data:

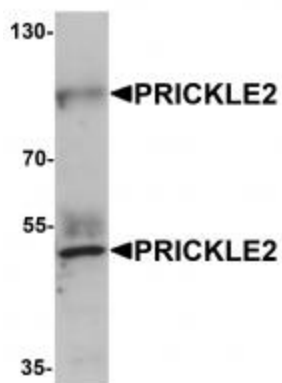
| | |
|-----------------------|--|
| Product Type: | Primary Antibodies |
| Applications: | IF, WB |
| Recommended Dilution: | WB: 1 ug/mL, IF: 20 ug/mL |
| Reactivity: | Human, Mouse, Rat |
| Host: | Rabbit |
| Isotype: | IgG |
| Clonality: | Polyclonal |
| Immunogen: | PRICKLE2 antibody was raised against a 15 amino acid synthetic peptide near the center of human PRICKLE2. |
| Formulation: | PRICKLE2 Antibody is supplied in PBS containing 0.02% sodium azide. |
| Concentration: | 1ug/ul |
| Purification: | PRICKLE2 Antibody is affinity chromatography purified via peptide column. |
| Conjugation: | Unconjugated |
| Storage: | Store at -20°C as received. |
| Stability: | Stable for 12 months from date of receipt. |
| Gene Name: | prickle planar cell polarity protein 2 |
| Database Link: | NP_942559 Entrez Gene 243548 Mouse Entrez Gene 312563 Rat Entrez Gene 166336 Human Q7Z3G6 |
| Background: | PRICKLE2 Antibody: PRICKLE2, also known as Pk2 or EPM5, is a member of a highly conserved protein family that function in the noncanonical WNT signaling pathway which regulates intracellular calcium release and planar cell polarity. Both PRICKLE2 and the related protein PRICKLE1 are expressed in postmitotic neurons and promote neurite outgrowth, and both proteins promote neurite outgrowth via the Dishevelled dependent pathway in C1300 cells. PRICKLE2 localizes to the postsynaptic density and interacts with PSD-95 and NMDA receptors. Defects in the gene encoding PRICKLE2 are associated with autosomal recessive progressive myoclonic epilepsy. |
| Synonyms: | EPM5 |



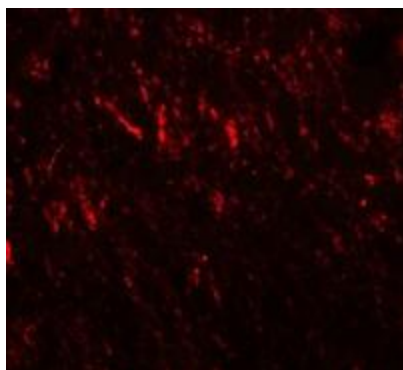
[View online »](#)

Protein Pathways: Wnt signaling pathway

Product images:



Western blot analysis of PRICKLE2 in A-20 lysate with PRICKLE2 antibody at 1 ug/mL.



Immunofluorescence of PRICKLE2 in rat brain cells with PRICKLE2 antibody at 20 ug/mL.