

## Product datasheet for **TA320124**

### GBP6 Rabbit Polyclonal Antibody

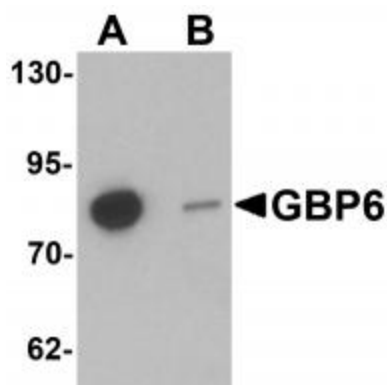
#### Product data:

Product Type:	Primary Antibodies
Applications:	IF, WB
Recommended Dilution:	WB: 0.5 ug/mL, IF: 5 ug/mL
Reactivity:	Human, Mouse
Host:	Rabbit
Isotype:	IgG
Clonality:	Polyclonal
Immunogen:	GBP6 antibody was raised against a 15 amino acid synthetic peptide near the carboxy terminus of human GBP6.
Formulation:	GBP6 Antibody is supplied in PBS containing 0.02% sodium azide.
Concentration:	1ug/ul
Purification:	GBP6 Antibody is affinity chromatography purified via peptide column.
Conjugation:	Unconjugated
Storage:	Store at -20°C as received.
Stability:	Stable for 12 months from date of receipt.
Gene Name:	guanylate binding protein family member 6
Database Link:	<a href="#">NP_940862</a> <a href="#">Entrez Gene 100702 Mouse</a> <a href="#">Entrez Gene 163351 Human</a> <a href="#">Q6ZN66</a>
Background:	GBP6 Antibody: The guanylate-binding proteins (GBPs), a family of interferon-induced GTP-binding proteins function in innate immunity against microbial and viral pathogens. In humans, there are seven GBPs from hGBP1 to hGBP7. Human GBP1 and GBP2 have been shown to exhibit antiviral activity as well as being able to regulate the inhibition of proliferation and invasion of endothelial cells in response to interferon (IFN) (1,3). GBP6 is induced by IFN and hydrolyzes GTP to both GDP and GMP. The precise function of GBP6 is still under investigation.
Synonyms:	DKFZp686G0786; FLJ39135

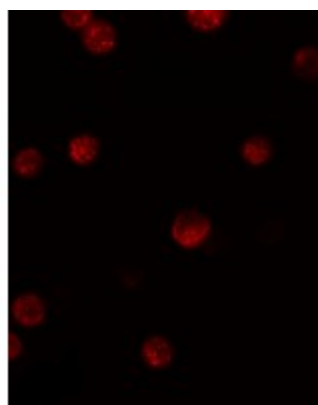


[View online »](#)

## Product images:



Western blot analysis of GBP6 in HeLa cell lysate with GBP6 antibody at 0.5 ug/mL in (A) the absence and (B) the presence of blocking peptide.



Immunofluorescence of GBP6 in HeLa cells with GBP6 antibody at 5 ug/mL.



Immunocytochemistry of GBP6 in HeLa cells with GBP6 antibody at 2.5 ug/mL.