

Product datasheet for **TA320123**

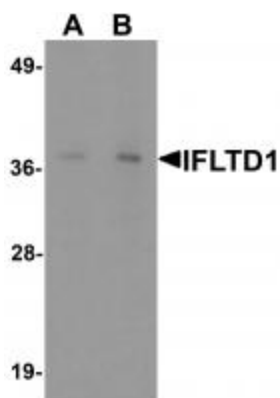
PAS1C1 (LMNTD1) Rabbit Polyclonal Antibody

Product data:

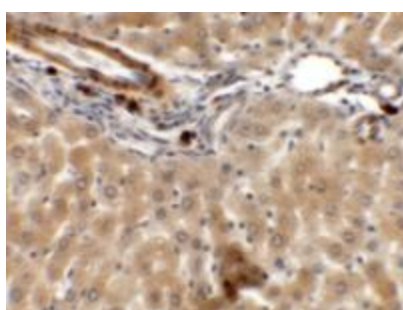
Product Type:	Primary Antibodies
Applications:	IHC, WB
Recommended Dilution:	WB: 1 - 2 ug/mL, ICC: 5 ug/mL
Reactivity:	Human, Mouse, Rat
Host:	Rabbit
Isotype:	IgG
Clonality:	Polyclonal
Immunogen:	IFLTD1 antibody was raised against an 19 amino acid synthetic peptide near the center of human IFLTD1.
Formulation:	IFLTD1 Antibody is supplied in PBS containing 0.02% sodium azide.
Concentration:	1ug/ul
Purification:	IFLTD1 Antibody is affinity chromatography purified via peptide column.
Conjugation:	Unconjugated
Storage:	Store at -20°C as received.
Stability:	Stable for 12 months from date of receipt.
Gene Name:	lamin tail domain containing 1
Database Link:	NP_001139200 Entrez Gene 160492 Human Q8N9Z9
Background:	IFLTD1 Antibody: The intermediate filament tail domain-containing protein (IFLTD1) was initially identified as a candidate gene for pulmonary adenoma susceptibility 1 gene in mice. Transcripts of the gene were only detected in mouse lung tissue from strains carrying the Pas1-susceptible allele. Expression of different alleles of this gene in lung cancer cell lines resulted in different levels of colony formation in in vitro colony formation assays, suggesting that allelic variants of this gene can modulate growth of human cancer cells.
Synonyms:	IFLTD1; PAS1C1


[View online »](#)

Product images:



Western blot analysis of IFLTD1 in rat liver tissue lysate with IFLTD1 antibody at (A) 1 and (B) 2 ug/mL.



Immunohistochemistry of ARHGAP39 in rat liver tissue with ARHGAP39 antibody at 5 ug/mL.