

## Product datasheet for **TA320122**

### FREM1 Rabbit Polyclonal Antibody

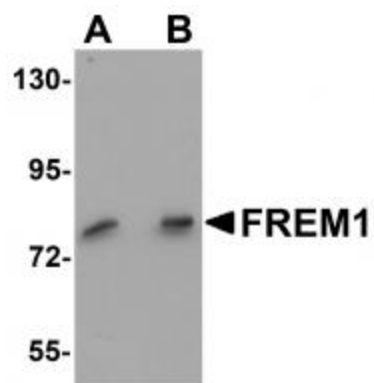
#### Product data:

|                       |   |
|-----------------------|---|
| Product Type:         | Primary Antibodies  |
| Applications:         | IF, WB  |
| Recommended Dilution: | WB: 0.5 - 1 ug/mL, ICC: 20 ug/mL, IF: 20 ug/mL  |
| Reactivity:           | Human, Mouse  |
| Host:                 | Rabbit  |
| Isotype:              | IgG   |
| Clonality:            | Polyclonal  |
| Immunogen:            | FREM1 antibody was raised against a 15 amino acid synthetic peptide near the carboxy terminus of human FREM1.   |
| Formulation:          | FREM1 Antibody is supplied in PBS containing 0.02% sodium azide.  |
| Concentration:        | 1ug/ul  |
| Purification:         | FREM1 Antibody is affinity chromatography purified via peptide column.  |
| Conjugation:          | Unconjugated  |
| Storage:              | Store at -20°C as received.   |
| Stability:            | Stable for 12 months from date of receipt.  |
| Gene Name:            | FRAS1 related extracellular matrix 1  |
| Database Link:        | <a href="#">NP_659403</a><br><a href="#">Entrez Gene 329872 Mouse</a> <a href="#">Entrez Gene 158326 Human</a><br><a href="#">Q5H8C1</a>  |
| Background:           | FREM1 Antibody: FREM1 is a member of the FRAS1-related extracellular matrix protein family and is thought to play a role in craniofacial and renal development. FREM1 functions as an extracellular matrix protein that is essential for epidermal adhesion during embryogenesis and may also participate in epidermal differentiation. It is recognized by cells in the embryonic skin and hair follicles through different members of the integrin family. Deficiency in the Fras1/Frem genes gives rise to the bleb phenotype, which is equivalent to the human hereditary disorder Fraser syndrome. |
| Synonyms:             | BNAR; C9orf143; C9orf145; C9orf154; MOTA; TILRR; TRIGNO2  |
| Protein Families:     | Protease, Transmembrane   |

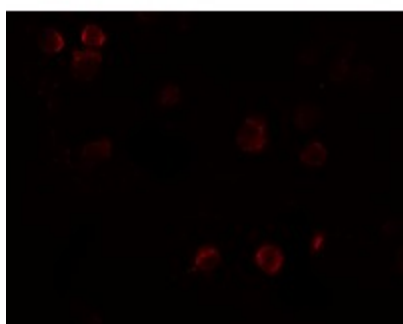


[View online »](#)

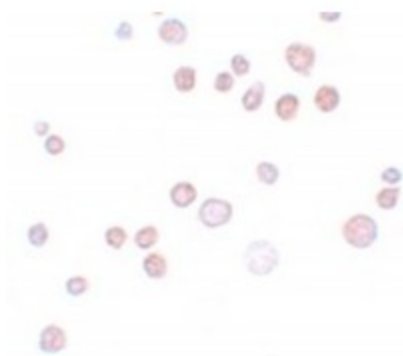
## Product images:



Western blot analysis of FREM1 in K562 cell lysate with FREM1 antibody at (A) 0.5 and (B) 1 ug/mL.



Immunofluorescence of FREM1 in K562 cells with FREM1 antibody at 20 ug/mL.



Immunocytochemistry of FREM1 in K562 cells with FREM1 antibody at 20 ug/mL.