

Product datasheet for **TA320121**

VPS13B Rabbit Polyclonal Antibody

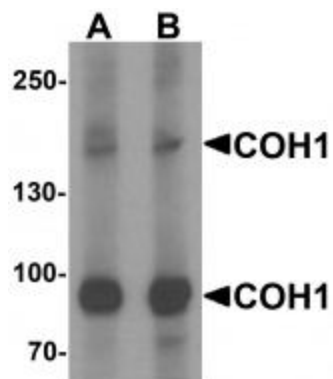
Product data:

Product Type:	Primary Antibodies
Applications:	IF, WB
Recommended Dilution:	WB: 1 - 2 ug/mL, IF: 20 ug/mL
Reactivity:	Human, Mouse, Rat
Host:	Rabbit
Isotype:	IgG
Clonality:	Polyclonal
Immunogen:	COH1 antibody was raised against a 17 amino acid synthetic peptide near the amino terminus of human COH1.
Formulation:	COH1 Antibody is supplied in PBS containing 0.02% sodium azide.
Concentration:	1ug/ul
Purification:	COH1 Antibody is affinity chromatography purified via peptide column.
Conjugation:	Unconjugated
Storage:	Store at -20°C as received.
Stability:	Stable for 12 months from date of receipt.
Gene Name:	vacuolar protein sorting 13 homolog B
Database Link:	NP_056058 Entrez Gene 315036 Rat Entrez Gene 666173 Mouse Entrez Gene 157680 Human Q7Z7G8
Background:	COH1 Antibody: COH1 (Cohen syndrome protein 1), also known as VPS13B (vacuolar protein sorting-associated protein 13B) or CHS1, belongs to the VPS13 family and may function in vesicle-mediated transport and sorting of proteins within the cell. COH1 is widely expressed and multiple alternatively spliced transcript variants have been observed. Mutations in this gene have been associated with Cohen syndrome. COH1 is a Golgi-localized peripheral membrane protein and plays a critical role in Golgi (re)assembly.
Synonyms:	CHS1; COH1

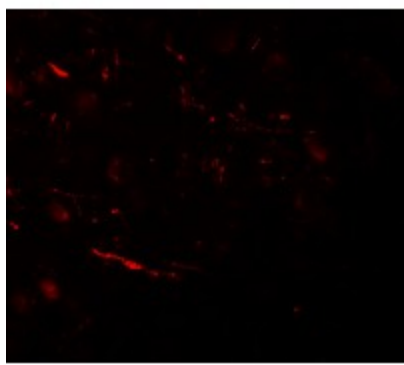


[View online »](#)

Product images:



Western blot analysis of COH1 in SK-N-SH cell lysate with COH1 antibody at (A) 1 and (B) 2 ug/mL.



Immunofluorescence of COH1 in human brain tissue with COH1 antibody at 20 ug/mL.