

Product datasheet for TA320120

RNF158 (SH3RF2) Rabbit Polyclonal Antibody

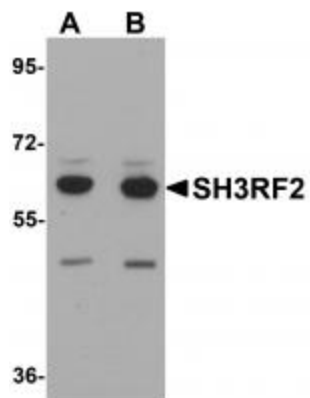
Product data:

Product Type:	Primary Antibodies
Applications:	IF, IHC, WB
Recommended Dilution:	WB: 1 - 2 ug/mL, ICC: 10 ug/mL, IF: 20 ug/mL
Reactivity:	Human, Mouse, Rat
Host:	Rabbit
Isotype:	IgG
Clonality:	Polyclonal
Immunogen:	SH3RF2 antibody was raised against a 17 amino acid synthetic peptide near the carboxy terminus of human SH3RF2.
Formulation:	SH3RF2 Antibody is supplied in PBS containing 0.02% sodium azide.
Concentration:	1ug/ul
Purification:	SH3RF2 Antibody is affinity chromatography purified via peptide column.
Conjugation:	Unconjugated
Storage:	Store at -20°C as received.
Stability:	Stable for 12 months from date of receipt.
Gene Name:	SH3 domain containing ring finger 2
Database Link:	NP_689763 Entrez Gene 269016 Mouse Entrez Gene 307472 Rat Entrez Gene 153769 Human Q8TEC5
Background:	SH3RF2 Antibody: Although the SH3 domain containing ring finger 2 protein (SH3RF2) has been identified as a marker of the nucleus accumbens in the human brain, little is known about this protein. Recent yeast two-hybrid experiments have shown that SH3RF2 associates with protein phosphatase 1 (PP1) and is expressed primarily in heart and testis tissue. Recombinant SH3RF2 enhanced PP1 enzymatic activity and antagonized the ability of phospho-inhibitor-1 or -2 to inhibit PP1, suggesting that SH3RF2 may play a role working with PP1 in cardiac functions.
Synonyms:	HEPP1; POSHER; PPP1R39; RNF158

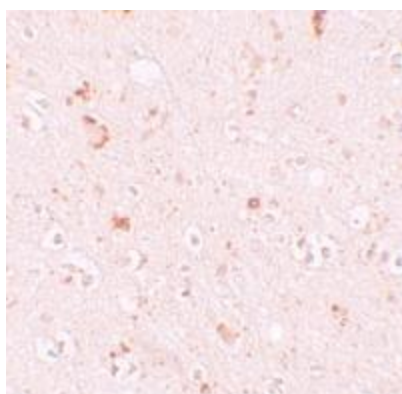


[View online »](#)

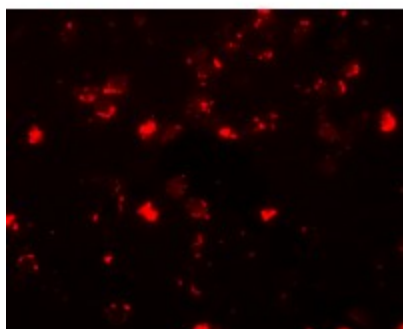
Product images:



Western blot analysis of SH3RF2 in 3T3 cell lysate with SH3RF2 antibody at (A) 1 and (B) 2 ug/mL.



Immunohistochemistry of SH3RF2 in human brain tissue with SH3RF2 antibody at 10 ug/mL.



Immunofluorescence of SH3RF2 in human brain tissue with SH3RF2 antibody at 20 ug/mL.