

Product datasheet for TA320116

SRARP Rabbit Polyclonal Antibody

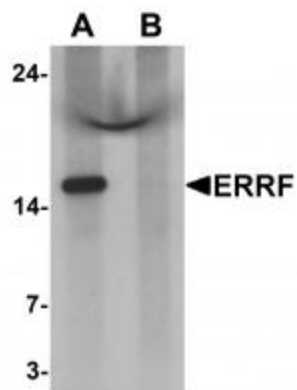
Product data:

Product Type:	Primary Antibodies
Applications:	IF, WB
Recommended Dilution:	WB: 1 ug/mL
Reactivity:	Human, Mouse
Host:	Rabbit
Isotype:	IgG
Clonality:	Polyclonal
Immunogen:	ERRF antibody was raised against a 15 amino acid peptide near the carboxy terminus of human ERRF .
Formulation:	ERRF Antibody is supplied in PBS containing 0.02% sodium azide.
Concentration:	1ug/ul
Purification:	ERRF Antibody is affinity chromatography purified via peptide column.
Conjugation:	Unconjugated
Storage:	Store at -20°C as received.
Stability:	Stable for 12 months from date of receipt.
Predicted Protein Size:	Predicted: 19 kDa; Observed: 15 kDa
Gene Name:	chromosome 1 open reading frame 64
Database Link:	NP_849162 Entrez Gene 277744 Mouse Entrez Gene 149563 Human Q8NEQ6
Background:	ERRF Antibody: The estrogen receptor-related factor (ERRF) is a recently identified protein whose expression is upregulated in multiple cell lines and primary breast cancer tumors. Increased ERRF expression was significantly associated with ER or progesterone receptor (PR) positivity even in HER2-negative tumors. This higher ERRF expression correlated with better disease-free survival and overall survival. In two ER-positive breast cancer cell lines, knockdown of ERRF suppressed cell growth in vitro and tumorigenesis in xenograft models, suggesting that ERRF plays a role in estrogen-ER-mediated breast cancer cell growth and may thus be a potential therapeutic target.

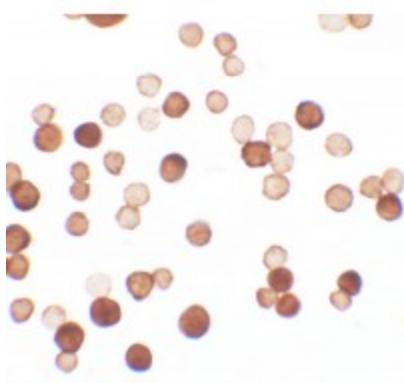

[View online »](#)

Synonyms: ERRF

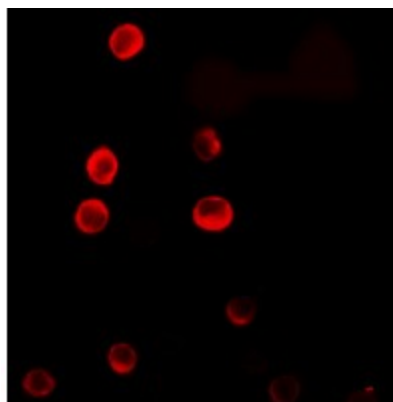
Product images:



Western blot analysis of ERRF in HeLa cell lysate with ERRF antibody at 1 ug/mL in (A) the absence and (B) the presence of blocking peptide.



Immunocytochemistry of ERRF in HeLa cells with ERRF antibody at 2.5 ug/mL.



Immunofluorescence of ERRF in HeLa cells with ERRF antibody at 20 ug/mL.