

Product datasheet for **TA320114**

RC3H1 Rabbit Polyclonal Antibody

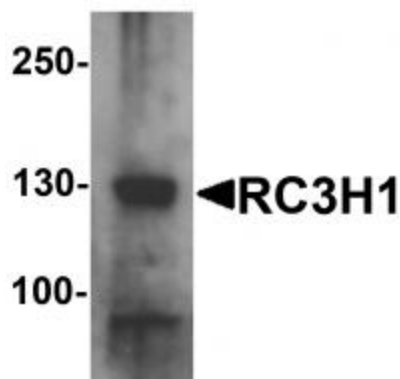
Product data:

Product Type:	Primary Antibodies
Applications:	IF, IHC, WB
Recommended Dilution:	WB: 1 - 2 ug/mL
Reactivity:	Human, Mouse, Rat
Host:	Rabbit
Isotype:	IgG
Clonality:	Polyclonal
Immunogen:	Rabbit polyclonal RC3H1 antibody was raised against an 18 amino acid peptide near the carboxy terminus of human RC3H1.
Formulation:	RC3H1 Antibody is supplied in PBS containing 0.02% sodium azide.
Concentration:	1ug/ul
Purification:	RC3H1 Antibody is affinity chromatography purified via peptide column.
Conjugation:	Unconjugated
Storage:	Store at -20°C as received.
Stability:	Stable for 12 months from date of receipt.
Predicted Protein Size:	125 kDa
Gene Name:	ring finger and CCCH-type domains 1
Database Link:	NP_742068 Entrez Gene 381305 MouseEntrez Gene 680586 RatEntrez Gene 149041 Human Q5TC82
Background:	RC3H1 Antibody: The ring finger protein RC3H1, also known as Roquin, is a highly conserved member of the RING type ubiquitin ligase protein family whose M199R mutation leads to the excessive production of follicular helper T cells and germinal centers in the sanroque strain of mice, a strain with excessive IL-21 production and high titers of autoantibodies. The complete loss of RC3H1 induces early death and immune deregulation but not autoimmunity in RC3H1-null mice, suggesting that the mutant RC3H1 is more disruptive to the immune system than its complete loss.
Synonyms:	RNF198; ROQUIN

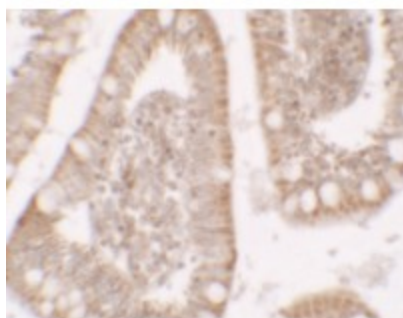

[View online »](#)

Protein Families: Druggable Genome

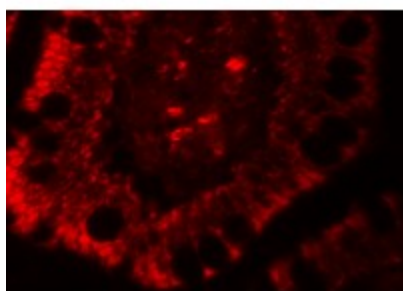
Product images:



Western blot analysis of RC3H1 in HeLa cell lysate with RC3H1 antibody at 1 ug/mL



Immunohistochemistry of RC3H1 in human small intestine tissue with RC3H1 antibody at 5 ug/mL.



Immunofluorescence of RC3H1 in human small intestine tissue with RC3H1 antibody at 20 ug/mL.