

Product datasheet for **TA320113**

NALP4 (NLRP4) Rabbit Polyclonal Antibody

Product data:

Product Type:	Primary Antibodies
Applications:	WB
Recommended Dilution:	WB: 1 ug/mL
Reactivity:	Human, Mouse
Host:	Rabbit
Isotype:	IgG
Clonality:	Polyclonal
Immunogen:	NALP4 antibody was raised against a 13 amino acid synthetic peptide near the center of human NALP4.
Formulation:	NALP4 Antibody is supplied in PBS containing 0.02% sodium azide.
Concentration:	1ug/ul
Purification:	NALP4 Antibody is affinity chromatography purified via peptide column.
Conjugation:	Unconjugated
Storage:	Store at -20°C as received.
Stability:	Stable for 12 months from date of receipt.
Gene Name:	NLR family, pyrin domain containing 4
Database Link:	AAL35293 Entrez Gene 147945 Human Q96MN2



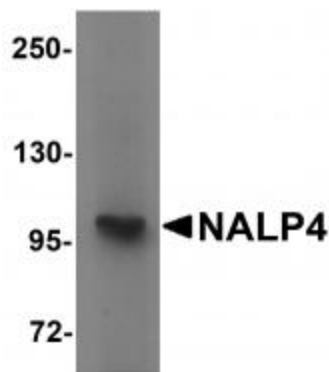
[View online »](#)

Background:

NALP4 Antibody: NALP proteins include the apoptosis regulator APAF1 (apoptotic protease activating factor 1) and mammalian NOD-LRR proteins and are thought to be involved in inflammation and reproduction. NALP4, also known as PYRIN-containing APAF1-like protein 4, has a C-terminal leucine-rich repeat (LRR) region, an N-terminal Pyrin domain (PYD) followed by a NACHT domain, and a NACHT-associated domain. In transfected 293 cells, NALP4 suppressed NF- κ B induction by TNF- α and IL-1 β , suggesting NALP4 operates at a point of convergence in these two signaling pathways. NALP4 also suppressed NF- κ B induction resulting from overexpression of several adapter proteins and protein kinases involved in these pathways, including TRAF2, TRAF6, RIP, and IRAK2, as well as the IKK-alpha and IKK-beta, suggesting that NALP4 is critical in modulating NF- κ B activity.

Synonyms:

CLR19.5; CT58; NALP4; PAN2; PYPAF4; RNH2

Product images:

Western blot analysis of NALP4 in K562 cell lysate with NALP4 antibody at 1 ug/mL.