

## Product datasheet for **TA320112**

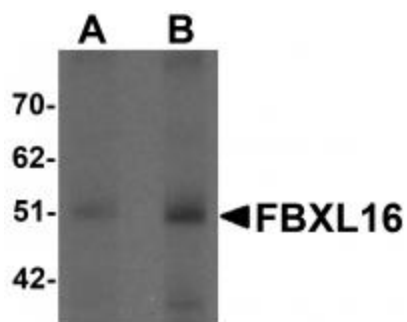
### FBXL16 Rabbit Polyclonal Antibody

#### Product data:

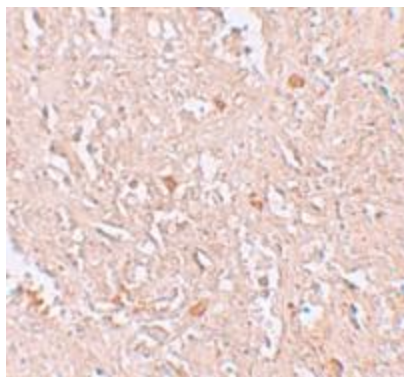
Product Type:	Primary Antibodies
Applications:	IF, IHC, WB
Recommended Dilution:	WB: 0.5 - 1 ug/mL, ICC: 5 ug/mL, IF: 20 ug/mL
Reactivity:	Human, Mouse, Rat
Host:	Rabbit
Isotype:	IgG
Clonality:	Polyclonal
Immunogen:	FBXL16 antibody was raised against an 18 amino acid synthetic peptide near the carboxy terminus of human FBXL16
Formulation:	FBXL16 Antibody is supplied in PBS containing 0.02% sodium azide.
Concentration:	1ug/ul
Purification:	FBXL16 Antibody is affinity chromatography purified via peptide column.
Conjugation:	Unconjugated
Storage:	Antibody can be stored at 4°C up to one year. Antibodies should not be exposed to prolonged high temperatures.
Stability:	Stable for 12 months from date of receipt.
Gene Name:	F-box and leucine-rich repeat protein 16
Database Link:	<a href="#">NP_699181</a> <a href="#">Entrez Gene 214931 Mouse</a> <a href="#">Entrez Gene 494223 Rat</a> <a href="#">Entrez Gene 146330 Human</a> <a href="#">Q8N461</a>
Background:	FBXL16 Antibody: FBXL16 (F-box and leucine-rich repeat protein 16), a member of the F-box protein family, is a probable substrate-recognition component of the SCF (SKP1-CUL1-F-box protein)-type E3 ubiquitin ligase complex. It is characterized by an approximately 40-amino acid F-box motif. F-box proteins interact with SKP1 through the F-box, and they interact with ubiquitination targets through other protein interaction domains. FBXL16 is a novel E2F1-regulated gene in crucial cell cycle regulation pathways.
Synonyms:	C16orf22; c380A1.1; Fbl16



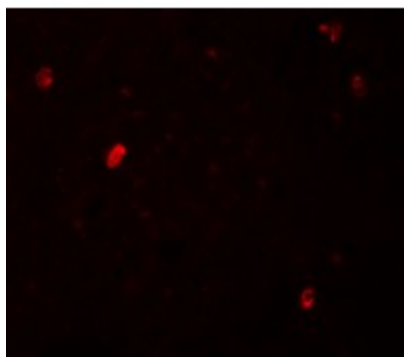
[View online »](#)

**Product images:**


Western blot analysis of FBXL16 in human spleen tissue lysate with FBXL16 antibody at (A) 0.5 and (B) 1 ug/mL.



Immunohistochemistry of FBXL16 in human spleen tissue with FBXL16 antibody at 5 ug/mL.



Immunofluorescence of FBXL16 in human spleen tissue with FBXL16 antibody at 20 ug/mL.