

Product datasheet for **TA320110**

GCOM1 (MYZAP) Rabbit Polyclonal Antibody

Product data:

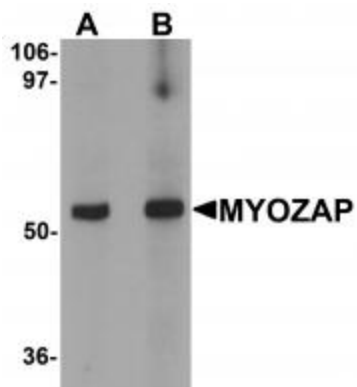
Product Type:	Primary Antibodies
Applications:	IF, IHC, WB
Recommended Dilution:	WB: 1 - 2 ug/mL, ICC: 5 ug/mL, IF: 20 ug/mL
Reactivity:	Human, Mouse, Rat
Host:	Rabbit
Isotype:	IgG
Clonality:	Polyclonal
Immunogen:	MYOZAP antibody was raised against a 18 amino acid synthetic peptide near the carboxy terminus of human MYOZAP.
Formulation:	MYOZAP Antibody is supplied in PBS containing 0.02% sodium azide.
Concentration:	1ug/ul
Purification:	MYOZAP Antibody is affinity chromatography purified via peptide column.
Conjugation:	Unconjugated
Storage:	Store at -20°C as received.
Stability:	Stable for 12 months from date of receipt.
Gene Name:	myocardial zonula adherens protein
Database Link:	NP_001018110 Entrez Gene 100820829 Human POCAP1
Background:	MYOZAP Antibody: MYOZAP, also known as GRINL1A, is a 54 kDa highly conserved cardiac protein. It is strongly expressed in the heart and lung and is a novel component of intercalated disc. MYOZAP interacts with myosin phosphatase-RhoA interacting protein (MRIP) and acts as an activator of Rho-dependent SRF signaling. Knockdown study in zebrafish results in cardiomyopathy with severe dysfunction. The MYOZAP gene is part of a complex transcript unit that includes the gene for glutamate receptor, ionotropic, N-methyl D-aspartate-like 1A (GRINL1A). Transcription of this gene occurs at an upstream promoter, with two different groups of alternatively spliced variants: Gup for GRINL1A upstream transcripts and Gcom for GRINL1A combined transcripts.



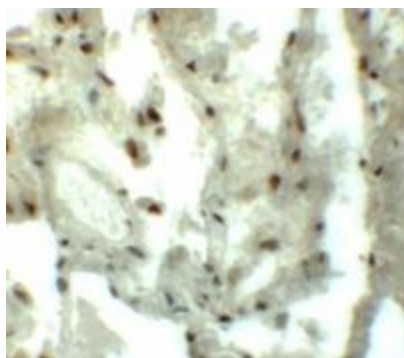
[View online »](#)

Synonyms: FLJ30973; Gcom2; GRINL1A; Gup1; Gup2; MGC126694; MGC138353

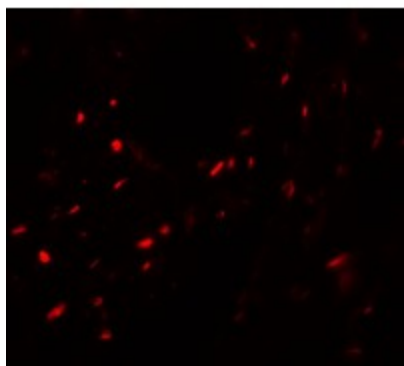
Product images:



Western blot analysis of MYOZAP in rat kidney tissue lysate with MYOZAP antibody at (A) 1 and (B) 2 ug/mL.



Immunohistochemistry of MYOZAP in human lung tissue with MYOZAP antibody at 5 ug/mL.



Immunofluorescence of MYOZAP in human lung tissue with MYOZAP antibody at 20 ug/mL.