

## Product datasheet for **TA320109**

### Prickle (PRICKLE1) Rabbit Polyclonal Antibody

#### Product data:

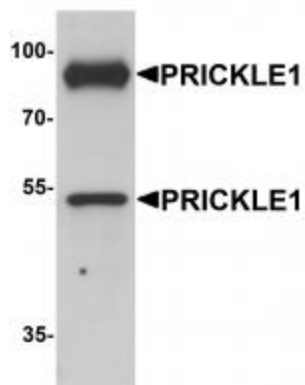
Product Type:	Primary Antibodies
Applications:	IF, WB
Recommended Dilution:	WB: 1 ug/mL, IF: 20 ug/mL
Reactivity:	Human, Mouse, Rat
Host:	Rabbit
Isotype:	IgG
Clonality:	Polyclonal
Immunogen:	PRICKLE1 antibody was raised against a 19 amino acid synthetic peptide near the carboxy terminus of human PRICKLE1.
Formulation:	PRICKLE1 Antibody is supplied in PBS containing 0.02% sodium azide.
Concentration:	1ug/ul
Purification:	PRICKLE1 Antibody is affinity chromatography purified via peptide column.
Conjugation:	Unconjugated
Storage:	Store at -20°C as received.
Stability:	Stable for 12 months from date of receipt.
Gene Name:	prickle planar cell polarity protein 1
Database Link:	<a href="#">NP_694571</a> <a href="#">Entrez Gene 106042 Mouse</a> <a href="#">Entrez Gene 315259 Rat</a> <a href="#">Entrez Gene 144165 Human</a> <a href="#">Q96MT3</a>
Background:	PRICKLE1 Antibody: PRICKLE1, also known as RILP or EPM1B, is a Disheveled-associated protein that serves as a nuclear translocation receptor for REST/NRSF and REST4 (1, 2). It contains three N-terminal LIM domains and three C-terminal nuclear localization signals. It localizes to the cytoplasm, as well as to the nuclear membrane and expressed at higher levels in placenta. PRICKLE1 is a negative regulator of the Wnt / beta-catenin signaling pathway and is a putative tumor suppressor in human HCCs. Defects in the gene encoding PRICKLE1 are associated with autosomal recessive progressive myoclonic epilepsy.
Synonyms:	EPM1B; RILP
Protein Families:	Druggable Genome



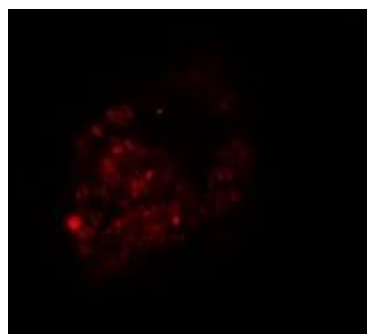
[View online »](#)

Protein Pathways: Wnt signaling pathway

### Product images:



Western blot analysis of PRICKLE1 in human bladder tissue lysate with PRICKLE1 antibody at 1 ug/mL.



Immunofluorescence of PRICKLE1 in human bladder cells with PRICKLE1 antibody at 20 ug/mL.