

Product datasheet for **TA320108**

C9orf116 Rabbit Polyclonal Antibody

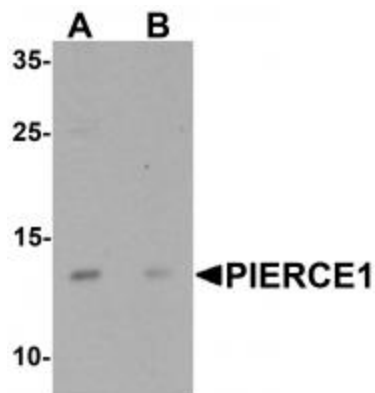
Product data:

Product Type:	Primary Antibodies
Applications:	IF, WB
Recommended Dilution:	WB: 1 ug/mL
Reactivity:	Human, Mouse
Host:	Rabbit
Isotype:	IgG
Clonality:	Polyclonal
Immunogen:	PIERCE1 antibody was raised against a 16 amino acid synthetic peptide near the amino terminus of human PIERCE1.
Formulation:	PIERCE1 Antibody is supplied in PBS containing 0.02% sodium azide.
Concentration:	1ug/ul
Purification:	PIERCE1 Antibody is affinity chromatography purified via peptide column.
Conjugation:	Unconjugated
Storage:	Store at -20°C as received.
Stability:	Stable for 12 months from date of receipt.
Gene Name:	chromosome 9 open reading frame 116
Database Link:	NP_653255 Entrez Gene 138162 Human Q5BN46
Background:	PIERCE1 Antibody: PIERCE1, also known as C9orf116, is an important p53 target gene contributing to normal DNA damage response and may play crucial roles in maintaining genomic integrity against genotoxic stresses, including UVC irradiation. PIERCE1 exists as two alternatively spliced isoforms and is predominantly expressed in human small cell lung cancer. PIERCE1 knockdown induces down-regulation of proapoptotic genes including Ei24, Apaf1 and PTEN, suggesting that PIERCE1 is a proapoptotic gene. It is helpful for in-depth understanding of p53 pathways and the design of new cancer therapies.
Synonyms:	PIERCE1; RbEST47



[View online »](#)

Product images:



Western blot analysis of PIERCE1 in A20 cell lysate with PIERCE1 antibody at 1 ug/mL in (A) the absence and (B) the presence of blocking peptide.



Immunocytochemistry of PIERCE1 in A20 cells with PIERCE1 antibody at 2.5 ug/mL.