

Product datasheet for **TA320107**

Nkx2.6 (NKX2-6) Rabbit Polyclonal Antibody

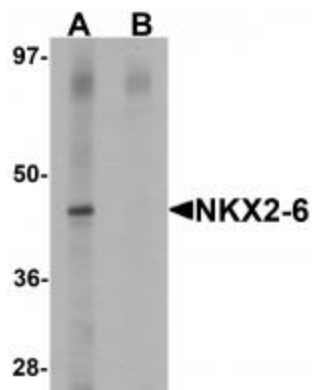
Product data:

Product Type:	Primary Antibodies
Applications:	IF, IHC, WB
Recommended Dilution:	WB: 1 ug/mL, ICC: 5 ug/mL, IF: 5 ug/mL
Reactivity:	Human, Mouse
Host:	Rabbit
Isotype:	IgG
Clonality:	Polyclonal
Immunogen:	NKX2-6 antibody was raised against a 15 amino acid synthetic peptide near the center of human NKX2-6.
Formulation:	NKX2-6 Antibody is supplied in PBS containing 0.02% sodium azide.
Concentration:	1 mg/ml
Purification:	NKX2-6 Antibody is affinity chromatography purified via peptide column.
Conjugation:	Unconjugated
Storage:	Store at -20°C as received.
Stability:	Stable for 12 months from date of receipt.
Gene Name:	NK2 homeobox 6
Database Link:	NP_001129743 Entrez Gene 18092 Mouse Entrez Gene 137814 Human A6NCS4
Background:	NKX2-6 Antibody: NKX2-6 (NK2 homeobox 6) is a member of a family of transcription factors that are involved in embryonic development and cell fate. NKX2-6 is a vertebrate homolog of Drosophila homeobox-containing protein called 'tinman', which has been shown to be essential for development of the heart-like dorsal vessel. In conjunction with related gene, NKX2-5, this gene may play a role in both pharyngeal and cardiac embryonic development. Mutations in this gene are thought to be a cause for some congenital heart abnormalities.
Synonyms:	CSX2; CTHM; NKX2F; NKX4-2

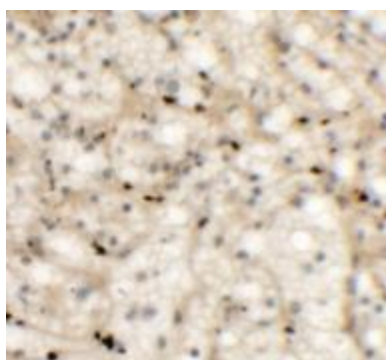


[View online »](#)

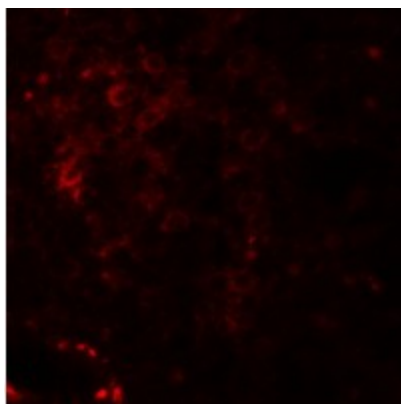
Product images:



Western blot analysis of NKX2-6 in mouse spleen tissue lysate with NKX2-6 antibody at 1 ug/mL in (A) the absence and (B) the presence of blocking peptide.



Immunohistochemistry of NKX2-6 in human spleen tissue with NKX2-6 antibody at 5 ug/mL.



Immunofluorescence of NKX-6 in human spleen tissue with NKX2-6 antibody at 20 ug/mL.