

Product datasheet for **TA320106**

SHROOM1 Rabbit Polyclonal Antibody

Product data:

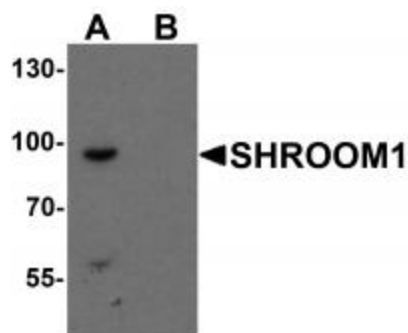
Product Type:	Primary Antibodies
Applications:	WB
Recommended Dilution:	WB: 1 - 2 ug/mL
Reactivity:	Human, Mouse, Rat
Host:	Rabbit
Isotype:	IgG
Clonality:	Polyclonal
Immunogen:	Rabbit polyclonal SHROOM1 antibody was raised against a 16 amino acid peptide near the carboxy terminus of human SHROOM1.
Formulation:	SHROOM1 Antibody is supplied in PBS containing 0.02% sodium azide.
Concentration:	1ug/ul
Purification:	SHROOM1 Antibody is affinity chromatography purified via peptide column.
Conjugation:	Unconjugated
Storage:	Store at -20°C as received.
Stability:	Stable for 12 months from date of receipt.
Predicted Protein Size:	94 kDa
Gene Name:	shroom family member 1
Database Link:	NP_001166171 Entrez Gene 134549 Human Q2M3G4
Background:	SHROOM1 Antibody: SHROOM family members play diverse roles in the development of the nervous system and other tissues. SHROOM1 is a PDZ domain-containing actin-binding protein that is required for neural tube morphogenesis. It facilitates neurulation by regulating the morphology of neuroepithelial cells via the apical positioning of an actomyosin network in the neuroepithelium. SHROOM1 is also expressed in pulmonary arterial smooth muscle cells and its expression is significantly decreased in mouse and human models of pulmonary arterial hypertension, suggesting that there may be a link between SHROOM1 expression and pulmonary arterial hypertension.



[View online »](#)

Synonyms: APXL2

Product images:



Western blot analysis of SHROOM1 in mouse heart tissue lysate with SHROOM1 antibody at 1 ug/mL in (A) the absence and (B) the presence of blocking peptide.