

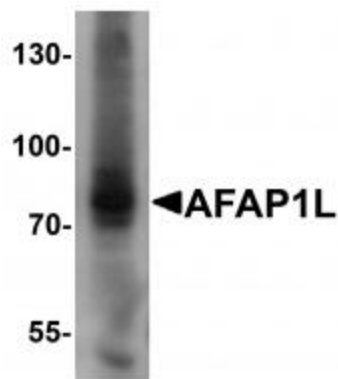
Product datasheet for **TA320105**

AFAP1L1 Rabbit Polyclonal Antibody

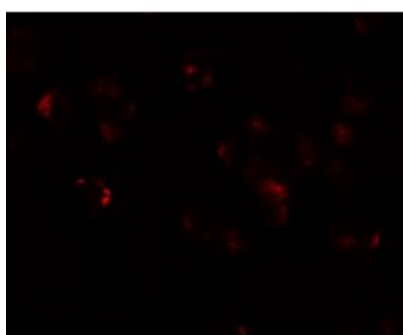
Product data:

Product Type:	Primary Antibodies
Applications:	IF, WB
Recommended Dilution:	WB: 1 ug/mL, ICC: 5 ug/mL, IF: 20 ug/mL
Reactivity:	Human, Mouse
Host:	Rabbit
Isotype:	IgG
Clonality:	Polyclonal
Immunogen:	AFAP1L1 antibody was raised against a 19 amino acid synthetic peptide near the amino terminus of human AFAP1L1.
Formulation:	AFAP1L Antibody is supplied in PBS containing 0.02% sodium azide.
Concentration:	1ug/ul
Purification:	AFAP1L Antibody is affinity chromatography purified via peptide column.
Conjugation:	Unconjugated
Storage:	Store at -20°C as received.
Stability:	Stable for 12 months from date of receipt.
Gene Name:	actin filament associated protein 1 like 1
Database Link:	NP_689619 Entrez Gene 106877 Mouse Entrez Gene 134265 Human Q8TED9
Background:	AFAP1L Antibody: The actin filament-associated protein 1 (AFAP1)-like 1 protein is one of three members in the AFAP1 family of adaptor proteins. Like AFAP1, AFAP1L1 is an actin binding protein that has a role in actin cytoskeleton arrangement, but AFAP1L1 is thought to have a unique function distinct from AFAP1. AFAP1L1 colocalizes with cortactin and localizes to invadosomes, highly dynamic, actin-rich adhesion structures harboring metalloproteases, suggesting that AFAP1L1 affects invadosome formation (1, 4). Recent reports suggest that AFAP1L1 can be used as a prognostic marker for spindle cell sarcomas.
Synonyms:	FLJ36748; MGC149773

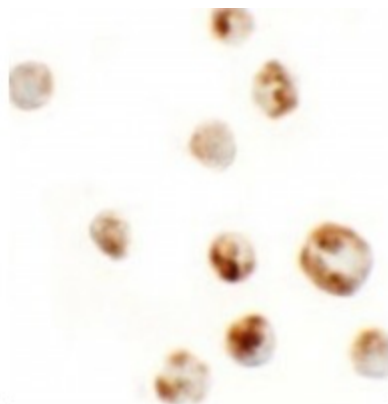

[View online »](#)

Product images:


Western blot analysis of AFAP1L1 in A549 cell lysate with AFAP1L1 antibody at 1 ug/mL.



Immunofluorescence of AFAP1L1 in A549 cells with AFAP1L1 antibody at 20 ug/mL.



Immunocytochemistry of AFAP1L1 in A549 cells with AFAP1L1 antibody at 5 ug/mL.