

Product datasheet for **TA320103**

SPATA18 Chicken Polyclonal Antibody

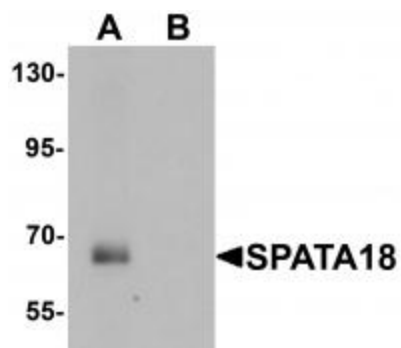
Product data:

Product Type:	Primary Antibodies
Applications:	WB
Recommended Dilution:	WB: 1 ug/mL
Reactivity:	Human, Mouse, Rat
Host:	Chicken
Isotype:	IgY
Clonality:	Polyclonal
Immunogen:	SPATA18 antibody was raised against a 19 amino acid synthetic peptide near the amino terminus of human SPATA18.
Formulation:	SPATA18 Antibody is supplied in PBS containing 0.02% sodium azide.
Concentration:	1ug/ul
Purification:	SPATA18 Antibody is affinity chromatography purified via peptide column.
Conjugation:	Unconjugated
Storage:	Store at -20°C as received.
Stability:	Stable for 12 months from date of receipt.
Gene Name:	spermatogenesis associated 18
Database Link:	NP_660306 Entrez Gene 73472 Mouse Entrez Gene 289586 Rat Entrez Gene 132671 Human Q8TC71
Background:	SPATA18 Antibody: SPATA18, also known as SPETEX-1, was initially identified as a cytoplasmic protein of elongate spermatids that is thought to be involved in differentiation process of elongate spermatids to mature spermatozoa. Recent experiments have shown that SPATA18 is a transcriptional target of p53 and p63. It has also been suggested to play a role in mitochondria quality control by inducing intramitochondrial lysosome-like organella that eliminate oxidized mitochondrial proteins.
Synonyms:	Mieap; SPETEX1



[View online »](#)

Product images:



Western blot analysis of SPATA18 in rat lung tissue lysate with SPATA18 antibody at 1 ug/mL in (A) the absence and (B) the presence of blocking peptide