

## Product datasheet for **TA320102**

### IL17RE Rabbit Polyclonal Antibody

#### Product data:

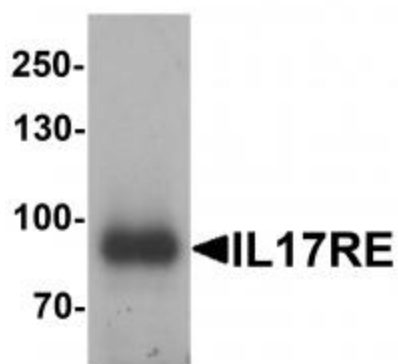
Product Type:	Primary Antibodies
Applications:	WB
Recommended Dilution:	WB: 1 - 2 ug/mL
Reactivity:	Human, Mouse, Rat
Host:	Rabbit
Isotype:	IgG
Clonality:	Polyclonal
Immunogen:	Rabbit polyclonal IL-17RE antibody was raised against a 16 amino acid peptide near the center of human IL-17RE.
Formulation:	IL-17RE Antibody is supplied in PBS containing 0.02% sodium azide.
Concentration:	1ug/ul
Purification:	IL-17RE Antibody is affinity chromatography purified via peptide column.
Conjugation:	Unconjugated
Storage:	Store at -20°C as received.
Stability:	Stable for 12 months from date of receipt.
Predicted Protein Size:	78 kDa
Gene Name:	interleukin 17 receptor E
Database Link:	<a href="#">NP_705616</a> <a href="#">Entrez Gene 132014 Human</a> <a href="#">Q8NFR9</a>
Background:	IL-17RE Antibody: The interleukin 17 receptor E (IL-17RE) shares limited similarity to the receptor of IL-17A, a ubiquitous type I membrane glycoprotein that with IL-17A plays a pathogenic role in many inflammatory and autoimmune diseases such as rheumatoid arthritis. IL-17RE is the functional receptor of IL-17C and has been suggested to mediate mucosal immunity to infection with intestinal pathogens. IL-17C is produced by epithelia in response to bacterial challenge and binds to a receptor complex formed by IL-17RE and IL-17RA on the epithelial cell surface, thereby regulating the immune function of epithelial cells in an autocrine manner.



[View online »](#)

Synonyms: FLJ23658; interleukin 17 receptor E; MGC71884; OTTHUMP00000158822

**Product images:**



Western blot analysis of IL-17RE in human ovary tissue lysate with IL-17RE antibody at 1 ug/mL.