

Product datasheet for **TA320097**

SGSM1 Rabbit Polyclonal Antibody

Product data:

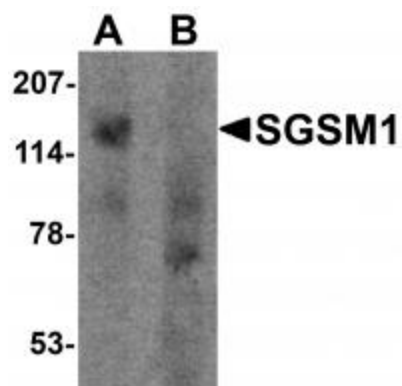
Product Type:	Primary Antibodies
Applications:	IF, WB
Recommended Dilution:	WB: 1 ug/mL, IF: 20 ug/mL
Reactivity:	Human, Mouse, Rat
Host:	Rabbit
Isotype:	IgG
Clonality:	Polyclonal
Immunogen:	SGSM1 antibody was raised against a 17 amino acid synthetic peptide near the center of human SGSM1.
Formulation:	SGSM1 Antibody is supplied in PBS containing 0.02% sodium azide.
Concentration:	1ug/ul
Purification:	SGSM1 Antibody is affinity chromatography purified via peptide column.
Conjugation:	Unconjugated
Storage:	Store at -20°C as received.
Stability:	Stable for 12 months from date of receipt.
Predicted Protein Size:	126 kDa
Gene Name:	small G protein signaling modulator 1
Database Link:	NP_001035037 Entrez Gene 129049 Human Q2NKQ1
Background:	SGSM1 Antibody: Small G proteins such as RAP and RAB proteins are the key molecules in intracellular signal transduction and vesicle transportation. A novel protein family small G protein signaling modulator (SGSM) consisting of three members SGSM1-3 bind to RAP and RAB family proteins. All three SGSM proteins possess both a RUN domain and a TBC domain. SGSM1 (RUTBC2) is a 1,148 amino acid protein that localizes to the Golgi apparatus and is mainly expressed in the CNS. SGSM1 interacts with RAP and RAB subfamily members of the small G proteins, and function as modulators of RAP and RAB-mediated neuronal signal transduction and vesicular transportation pathways.



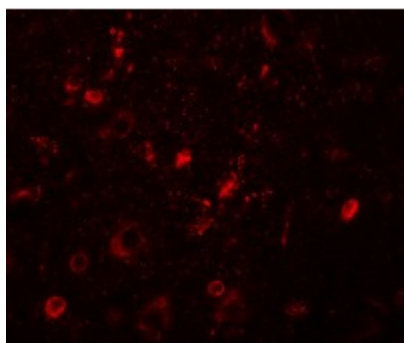
[View online »](#)

Synonyms: RUTBC2

Product images:



Western blot analysis of SGSM1 in human cerebellum tissue lysate with SGSM1 antibody at 1 ug/ml in (A) the absence and (B) the presence of blocking peptide.



Immunofluorescence of SGSM1 in human brain tissue with SGSM1 antibody at 20 ug/mL.