

## Product datasheet for **TA320094**

### ANKLE1 Chicken Polyclonal Antibody

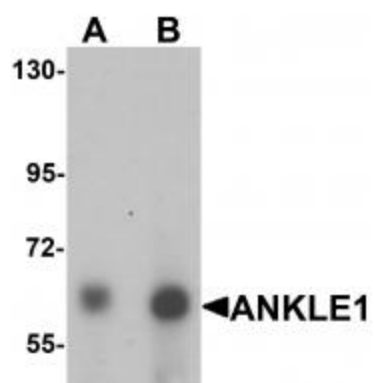
#### Product data:

Product Type:	Primary Antibodies
Applications:	WB
Recommended Dilution:	WB: 1 - 2 ug/mL
Reactivity:	Human, Mouse, Rat
Host:	Chicken
Isotype:	IgY
Clonality:	Polyclonal
Immunogen:	ANKLE1 antibody was raised against a 15 amino acid synthetic peptide near the carboxy terminus of human ANKLE1.
Formulation:	ANKLE1 Antibody is supplied in PBS containing 0.02% sodium azide.
Concentration:	1ug/ul
Purification:	ANKLE1 Antibody is affinity chromatography purified via peptide column.
Conjugation:	Unconjugated
Storage:	Store at -20°C as received.
Stability:	Stable for 12 months from date of receipt.
Gene Name:	ankyrin repeat and LEM domain containing 1
Database Link:	<a href="#">NP_689576</a> <a href="#">Entrez Gene 234396 Mouse</a> <a href="#">Entrez Gene 361122 Rat</a> <a href="#">Entrez Gene 126549 Human</a> <a href="#">Q8NAG6</a>
Background:	ANKLE1 Antibody: Ankyrins are membrane adaptor molecules that play important roles in coupling integral membrane proteins to the spectrin-based cytoskeleton network. ANKLE1 (Ankyrin repeat and LEM domain containing 1) is a member of ankyrin repeat and LEM domain containing family. It is a potential single-pass membrane protein that contains ankyrin repeats and a Lem domain. Ankyrin repeats mediate protein-protein interactions and are among the most common structural motifs in known proteins. While the function of this protein is still under investigation, its gene locus has been associated with susceptibility to ovarian and breast cancer.
Synonyms:	ANKRD41; LEM3; LEMD6



[View online »](#)

## Product images:



Western blot analysis of ANKLE1 in 293 cell lysate with ANKLE1 antibody at (A) 1 and (B) 2 ug/mL.