

Product datasheet for **TA320093**

NALP5 (NLRP5) Rabbit Polyclonal Antibody

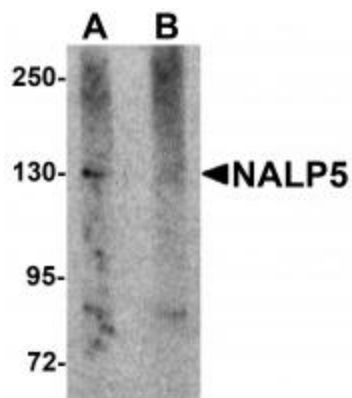
Product data:

Product Type:	Primary Antibodies
Applications:	IF, IHC, WB
Recommended Dilution:	WB: 1 ug/mL, ICC: 10 ug/mL, IF: 20 ug/mL
Reactivity:	Human, Mouse, Rat
Host:	Rabbit
Isotype:	IgG
Clonality:	Polyclonal
Immunogen:	NALP5 antibody was raised against a 14 amino acid synthetic peptide near the carboxy terminus of human NALP5.
Formulation:	NALP5 Antibody is supplied in PBS containing 0.02% sodium azide.
Concentration:	1ug/ul
Purification:	NALP5 Antibody is affinity chromatography purified via peptide column.
Conjugation:	Unconjugated
Storage:	Store at -20°C as received.
Stability:	Stable for 12 months from date of receipt.
Gene Name:	NLR family, pyrin domain containing 5
Database Link:	NP_703148 Entrez Gene 23968 Mouse Entrez Gene 308325 Rat Entrez Gene 126206 Human P59047
Background:	NALP5 Antibody: NALP proteins include the apoptosis regulator APAF1 (apoptotic protease activating factor 1) and mammalian NOD-LRR proteins and are thought to be involved in inflammation and reproduction. NALP5, also known as MATER, is a maternal gene required for early embryonic development in mice. Increased NALP5 expression was observed in two neuronal injury models, and transient expression of recombinant NALP5 in neurons induced caspase-3 activation and apoptosis, suggesting that NALP5 also plays a role in caspase activation and apoptosis in injured neurons, and may thus represent a novel target for therapeutic treatment in neurodegenerative disorders.
Synonyms:	CLR19.8; MATER; NALP5; PAN11; PYPAF8

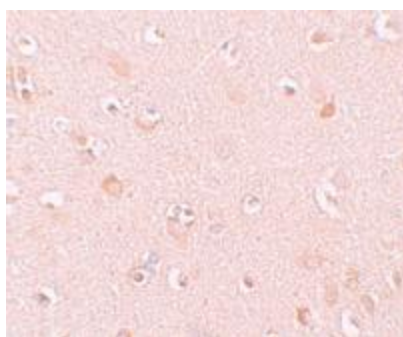


[View online »](#)

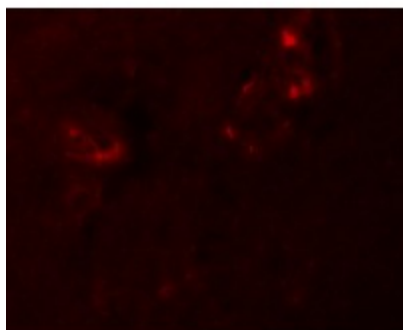
Product images:



Western blot analysis of NALP5 in mouse brain tissue lysate with NALP5 antibody at 1 ug/mL in (A) the absence and (B) the presence of blocking peptide.



Immunohistochemistry of NALP5 in human brain tissue with NALP5 antibody at 10 ug/mL.



Immunofluorescence of NALP5 in human brain tissue with NALP5 antibody at 20 ug/mL.