

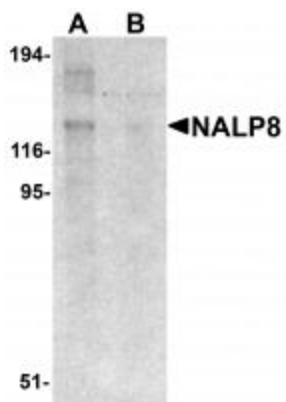
Product datasheet for TA320092

NLRP8 Rabbit Polyclonal Antibody

Product data:

Product Type:	Primary Antibodies
Applications:	WB
Recommended Dilution:	WB: 1 ug/mL
Reactivity:	Human
Host:	Rabbit
Isotype:	IgG
Clonality:	Polyclonal
Immunogen:	NALP8 antibody was raised against a 16 amino acid synthetic peptide near the amino terminus of human NALP8.
Formulation:	NALP8 Antibody is supplied in PBS containing 0.02% sodium azide.
Concentration:	1ug/ul
Purification:	NALP8 Antibody is affinity chromatography purified via peptide column.
Conjugation:	Unconjugated
Storage:	Store at -20°C as received.
Stability:	Stable for 12 months from date of receipt.
Gene Name:	NLR family, pyrin domain containing 8
Database Link:	NP_789781 Entrez Gene 126205 Human Q86W28
Background:	NALP8 Antibody: NALP proteins are cytoplasmic proteins that form a subfamily within the larger CATERPILLER family and are thought to play a crucial role in cell proliferation and reproduction. Like all other NALP family members, NALP8 has a C-terminal leucine-rich repeat (LRR) region, an N-terminal Pyrin domain (PYD) followed by a NACHT domain, and a NACHT-associated domain. It maps to chromosome 19q13.42 and is thought to be expressed in testis and ovary, suggesting that NALP8 may be involved in reproduction. Surprisingly, NALP8 seems to be universal in mammals except for rodents, suggesting that the gene may have been lost during evolution.
Synonyms:	CLR19.2; NALP8; NOD16; PAN4


[View online »](#)

Product images:

Western blot analysis of NALP8 in human colon tissue lysate with NALP8 antibody at 1 ug/mL in (A) the absence and (B) the presence of blocking peptide.