

## Product datasheet for **TA320091**

### NLRP13 Rabbit Polyclonal Antibody

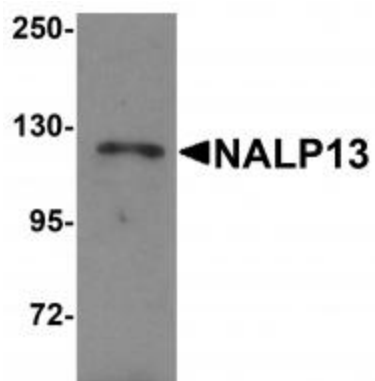
#### Product data:

Product Type:	Primary Antibodies
Applications:	IF, WB
Recommended Dilution:	WB: 1 ug/mL, IF: 20 ug/mL
Reactivity:	Human
Host:	Rabbit
Isotype:	IgG
Clonality:	Polyclonal
Immunogen:	NALP13 antibody was raised against a 19 amino acid synthetic peptide near the amino terminus of human NALP13.
Formulation:	NALP13 Antibody is supplied in PBS containing 0.02% sodium azide.
Concentration:	1ug/ul
Purification:	NALP13 Antibody is affinity chromatography purified via peptide column.
Conjugation:	Unconjugated
Storage:	Store at -20°C as received.
Stability:	Stable for 12 months from date of receipt.
Gene Name:	NLR family, pyrin domain containing 13
Database Link:	<a href="#">NP_789780</a> <a href="#">Entrez Gene 126204 Human</a> <a href="#">Q86W25</a>
Background:	NALP13 Antibody: NALP proteins are cytoplasmic proteins that form a subfamily within the larger CATERPILLER family and are thought to play a crucial role in cell proliferation and reproduction. Like all other NALP family members, NALP13 has a C-terminal leucine-rich repeat (LRR) region, an N-terminal Pyrin domain (PYD) followed by a NACHT domain, and a NACHT-associated domain. While little is known about the function of NALP13, it has been suggested that it may be implicated in the activation of proinflammatory caspases via inflammasomes.
Synonyms:	CLR19.7; NALP13; NOD14; PAN13

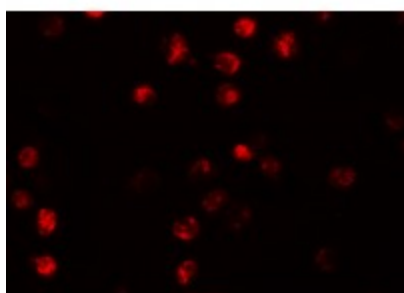


[View online »](#)

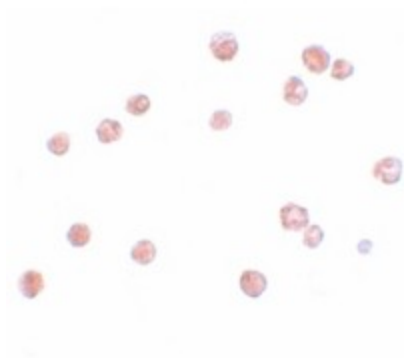
## Product images:



Western blot analysis of NALP13 in K562 cell lysate with NALP13 antibody at 1 ug/mL.



Immunofluorescence of NALP13 in K562 cells with NALP13 antibody at 20 ug/mL.



Immunocytochemistry of NALP13 in K562 cells with NALP13 antibody at 2.5 ug/mL.