

## Product datasheet for **TA320090**

### MSI2 Rabbit Polyclonal Antibody

#### Product data:

Product Type:	Primary Antibodies
Applications:	IF, WB
Recommended Dilution:	WB: 1 ug/mL, ICC: 5 ug/mL, IF: 5 ug/mL
Reactivity:	Human, Mouse, Rat
Host:	Rabbit
Isotype:	IgG
Clonality:	Polyclonal
Immunogen:	MSI2 antibody was raised against a 15 amino acid synthetic peptide near the amino terminus of human MSI2.
Formulation:	MSI2 Antibody is supplied in PBS containing 0.02% sodium azide.
Concentration:	1ug/ul
Purification:	MSI2 Antibody is affinity chromatography purified via peptide column.
Conjugation:	Unconjugated
Storage:	Store at -20°C as received.
Stability:	Stable for 12 months from date of receipt.
Gene Name:	musashi RNA binding protein 2
Database Link:	<a href="#">NP_620412</a> <a href="#">Entrez Gene 76626 Mouse</a> <a href="#">Entrez Gene 360596 Rat</a> <a href="#">Entrez Gene 124540 Human</a> <a href="#">Q96DH6</a>

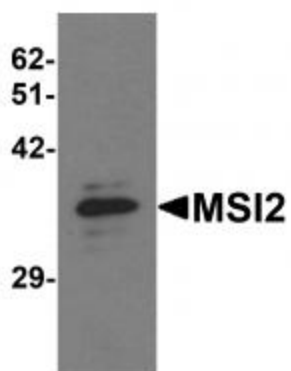
**Background:** MSI2 Antibody: Musashi2 (MSI2) is an RNA-binding protein that is highly expressed in precursor cells in the ventricular and subventricular zones of the developing mammalian CNS. Like the related MSI1, MSI2 has been suggested to be involved stem cell production and maintenance. MSI2 is the predominant MSI protein in hematopoietic stem cells, and its knockdown leads to reduced engraftment and depletion in vivo. Expression levels of MSI2 are elevated in myeloid leukemia cells lines, and MSI2 appears to cooperate with BCR-ABL1 to induce an aggressive leukemia; the level of MSI2 directly correlates with decreased survival in patients. MSI2 negatively regulates the asymmetric cell fate determinant NUMB, suggesting that this signaling pathway may provide future targets for future therapies.



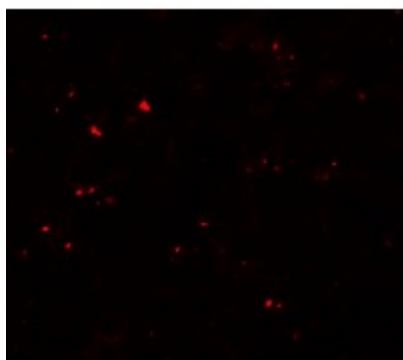
[View online »](#)

Synonyms: MSI2H

### Product images:



Western blot analysis of MSI2 in EL4 cell lysate with MSI2 antibody at 1 ug/mL.



Immunofluorescence of MSI2 in EL4 cells with MSI2 antibody at 20 ug/mL.



Immunocytochemistry of MSI2 in EL4 cells with MSI2 antibody at 5 ug/mL.