

## Product datasheet for **TA320087**

### DBX1 Rabbit Polyclonal Antibody

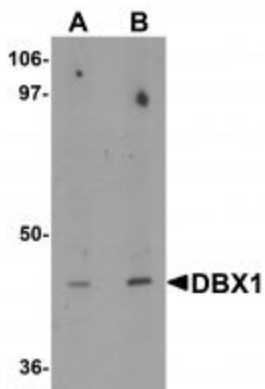
#### Product data:

Product Type:	Primary Antibodies
Applications:	IF, IHC, WB
Recommended Dilution:	WB: 1 - 2 ug/mL, ICC: 2.5 ug/mL, IF: 20 ug/mL
Reactivity:	Human, Mouse, Rat
Host:	Rabbit
Isotype:	IgG
Clonality:	Polyclonal
Immunogen:	DBX1 antibody was raised against a 15 amino acid synthetic peptide near the center of human DBX1.
Formulation:	DBX1 Antibody is supplied in PBS containing 0.02% sodium azide.
Concentration:	1ug/ul
Purification:	DBX1 Antibody is affinity chromatography purified via peptide column.
Conjugation:	Unconjugated
Storage:	Store at -20°C as received.
Stability:	Stable for 12 months from date of receipt.
Gene Name:	developing brain homeobox 1
Database Link:	<a href="#">NP_001025036</a> <a href="#">Entrez Gene 13172 Mouse</a> <a href="#">Entrez Gene 292934 Rat</a> <a href="#">Entrez Gene 120237 Human</a> <a href="#">A6NMTQ</a>
Background:	DBX1 Antibody: DBX1 is implicated in patterning the central nervous system during embryogenesis. DBX1 homeodomain transcription factor is expressed in progenitors which are critical in establishing cell fate allocation and cell diversity. DBX1 has a key role in regulating the distinct phenotypic features that distinguish two major classes of ventral interneurons, V0 and V1 neurons. DBX1-derived neurons are essential for the transgenic expression and generation of respiratory behavior both in vitro and in vivo.
Synonyms:	developing brain homeobox 1

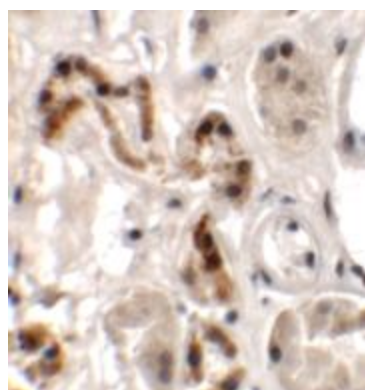


[View online »](#)

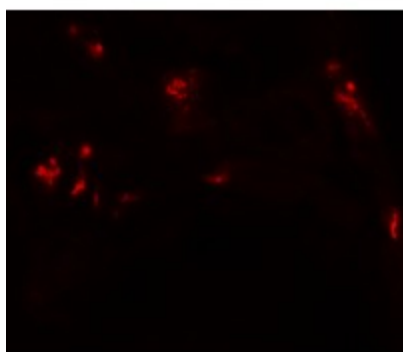
## Product images:



Western blot analysis of DBX1 in mouse kidney tissue lysate with DBX1 antibody at (A) 1 and (B) 2 ug/mL.



Immunohistochemistry of DBX1 in human kidney tissue with DBX1 antibody at 2.5 ug/mL.



Immunofluorescence of DBX1 in human kidney tissue with DBX1 antibody at 20 ug/mL.