

Product datasheet for **TA320082**

PRRT2 Rabbit Polyclonal Antibody

Product data:

Product Type:	Primary Antibodies
Applications:	IF, IHC, WB
Recommended Dilution:	WB: 1 ug/mL
Reactivity:	Human, Mouse, Rat
Host:	Rabbit
Isotype:	IgG
Clonality:	Polyclonal
Immunogen:	PRRT2 antibody was raised against a 18 amino acid peptide near the center of human PRRT2 .
Formulation:	PRRT2 Antibody is supplied in PBS containing 0.02% sodium azide.
Concentration:	1 mg/ml
Purification:	PRRT2 Antibody is affinity chromatography purified via peptide column.
Conjugation:	Unconjugated
Storage:	Store at -20°C as received.
Stability:	Stable for 12 months from date of receipt.
Predicted Protein Size:	Predicted: 43 kDa; Observed: 44 kDa
Gene Name:	proline rich transmembrane protein 2
Database Link:	NP_001243371 Entrez Gene 112476 Human Q7Z6L0

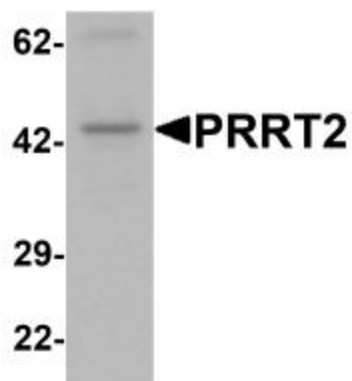
Background: PRRT2 Antibody: The proline-rich transmembrane protein 2 (PRRT2) contains a proline-rich domain in its N-terminal half and is predominantly expressed in brain and spinal cord in embryonic and postnatal stages. While little is known of the function of this protein, mutations in PRRT2 have been shown to be the causative gene of paroxysmal kinesigenic dyskinesia, which is characterized by recurrent, brief attacks of abnormal involuntary movements induced by sudden voluntary movements. Recent studies have shown that PRRT2 may also be involved in some forms of benign familial infantile epilepsy (BFIE), an autosomal dominant epilepsy syndrome.



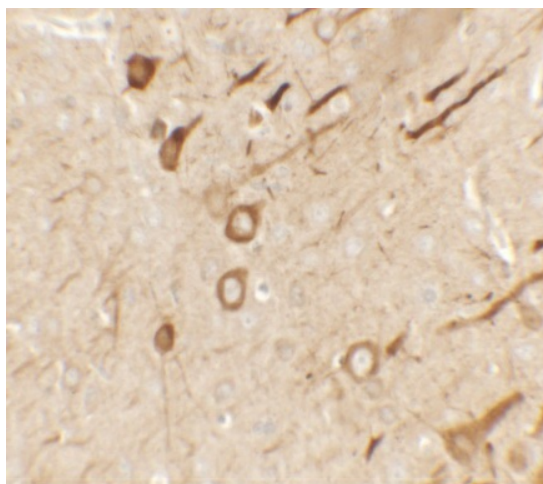
[View online »](#)

Synonyms: BFIC2; BFIS2; DSPB3; DYT10; EKD1; FICCA; ICCA; IFITMD1; PKC

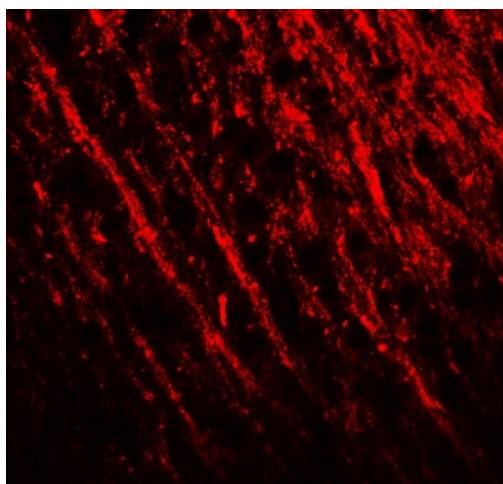
Product images:



Western blot analysis of PRRT2 in mouse brain tissue lysate with PRRT2 antibody at 1 ug/mL.



Immunohistochemistry of PRRT2 in rat brain tissue with PRRT2 antibody at 2.5 ug/mL.



Immunofluorescence of PRRT2 in rat brain tissue with PRRT2 antibody at 20 ug/mL.