

Product datasheet for **TA320080**

SYTL5 Rabbit Polyclonal Antibody

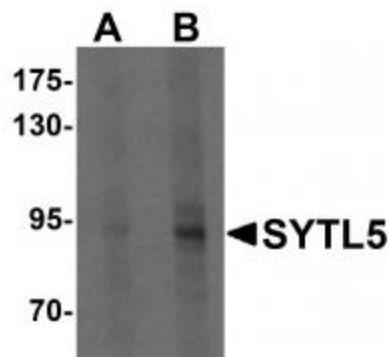
Product data:

Product Type:	Primary Antibodies
Applications:	IHC, WB
Recommended Dilution:	WB: 1 - 2 ug/mL, ICC: 5 ug/mL
Reactivity:	Human, Mouse, Rat
Host:	Rabbit
Isotype:	IgG
Clonality:	Polyclonal
Immunogen:	SYTL5 antibody was raised against a 17 amino acid synthetic peptide near the amino terminus of human SYTL5.
Formulation:	SYTL5 Antibody is supplied in PBS containing 0.02% sodium azide.
Concentration:	1ug/ul
Purification:	SYTL5 Antibody is affinity chromatography purified via peptide column.
Conjugation:	Unconjugated
Storage:	Store at -20°C as received.
Stability:	Stable for 12 months from date of receipt.
Gene Name:	synaptotagmin like 5
Database Link:	NP_620135 Entrez Gene 236643 Mouse Entrez Gene 302538 Rat Entrez Gene 94122 Human Q8TDW5
Background:	SYTL5 Antibody: SYTL5 belongs to the synaptotagmin-like (Slp) protein family, which contains a unique Slp homolog domain (SHD) at the N-terminus. The SHD functions as a binding site for Rab27A, which plays a role in protein transport. Expression of SYTL5 is restricted to placenta and liver, suggesting that it might be involved in Rab27A-dependent membrane trafficking in specific tissues. Several members of the synaptotagmin family are calcium-sensing vesicle-fusion proteins as mediators of cell migration. SYTL7 & SYTL5 were positive regulators of chemotaxis, whereas SYTL2 was a negative regulator of chemotaxis.
Synonyms:	slp5

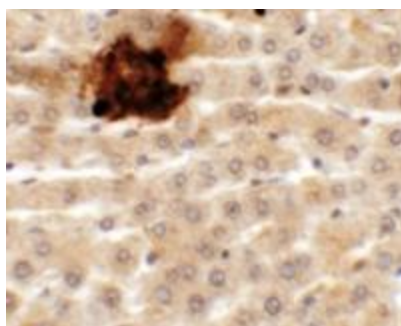


[View online »](#)

Product images:



Western blot analysis of SYTL5 in HeLa cell lysate with SYTL5 antibody at (A) 1 and (B) 2 ug/mL.



Immunohistochemistry of SYTL2 in rat liver tissue with SYTL2 antibody at 5 ug/mL.