

Product datasheet for **TA320079**

ORMDL1 Rabbit Polyclonal Antibody

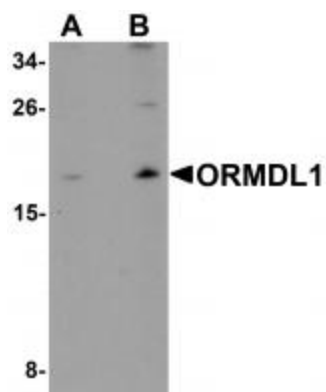
Product data:

Product Type:	Primary Antibodies
Applications:	IF, IHC, WB
Recommended Dilution:	WB: 1 - 2 ug/mL, ICC: 5 ug/mL, IF: 20 ug/mL
Reactivity:	Human, Mouse, Rat
Host:	Rabbit
Isotype:	IgG
Clonality:	Polyclonal
Immunogen:	ORMDL1 antibody was raised against a 16 amino acid synthetic peptide of human ORMDL1.
Formulation:	ORMDL1 Antibody is supplied in PBS containing 0.02% sodium azide.
Concentration:	1ug/ul
Purification:	ORMDL1 Antibody is affinity chromatography purified via peptide column.
Conjugation:	Unconjugated
Storage:	Store at -20°C as received.
Stability:	Stable for 12 months from date of receipt.
Gene Name:	ORMDL sphingolipid biosynthesis regulator 1
Database Link:	NP_057551 Entrez Gene 94101 Human Q9P0S3
Background:	ORMDL1 Antibody: The ORMDL (ORM1-like) family of proteins consist of ORMDL1, ORMDL2 and ORMDL3 that may play roles in gamma-secretase complex maturation. Localized to the membrane of the endoplasmic reticulum, ORMDLs are widely expressed and are implicated in the expression of Presenilin (PSI) which is involved in Alzheimer's disease (AD). Expression of ORMDL1 is down-regulated in PSI mutations, suggesting a possible role as a therapeutic target for AD. ORMDLs have recently been identified as a potential risk factor for childhood asthma.
Synonyms:	DKFZp686G141; FLJ44364

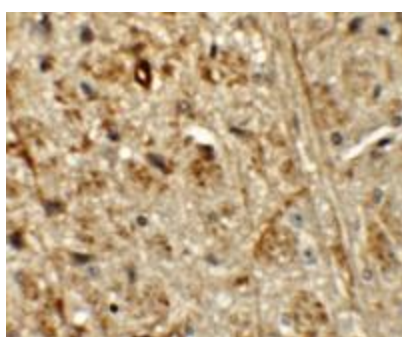


[View online »](#)

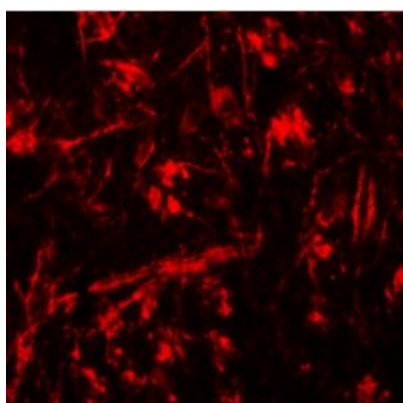
Product images:



Western blot analysis of ORMDL1 in SK-N-SH Cell lysate with ORMDL1 antibody at (A) 1 ug/mL and (B) 2 ug/mL.



Immunohistochemistry of ORMDL1 in mouse brain tissue with ORMDL1 antibody at 5 ug/mL.



Immunofluorescence of ORMDL1 in mouse brain tissue with ORMDL1 antibody at 20 ug/mL.