

## Product datasheet for **TA320078**

### TTYH2 Rabbit Polyclonal Antibody

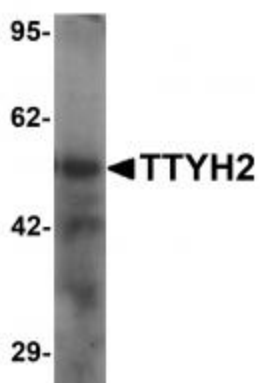
#### Product data:

Product Type:	Primary Antibodies
Applications:	IF, IHC, WB
Recommended Dilution:	WB: 1 ug/mL, ICC: 2.5 ug/mL
Reactivity:	Human, Mouse, Rat
Host:	Rabbit
Isotype:	IgG
Clonality:	Polyclonal
Immunogen:	TTYH2 antibody was raised against a 14 amino acid synthetic peptide near the amino terminus of human TTYH2.
Formulation:	TTYH2 Antibody is supplied in PBS containing 0.02% sodium azide.
Concentration:	1ug/ul
Purification:	TTYH2 Antibody is affinity chromatography purified via peptide column.
Conjugation:	Unconjugated
Storage:	Store at -20°C as received.
Stability:	Stable for 12 months from date of receipt.
Gene Name:	tweety family member 2
Database Link:	<a href="#">NP_116035</a> <a href="#">Entrez Gene 117160 Mouse</a> <a href="#">Entrez Gene 287803 Rat</a> <a href="#">Entrez Gene 94015 Human</a> <a href="#">Q9BSA4</a>
Background:	TTYH2 Antibody: TTYH2 is a member of the tweety family of proteins, a family of chloride anion channels containing five transmembrane regions. TTYH2 is a Ca <sup>2+</sup> -activated large conductance chloride (Cl <sup>-</sup> ) channel and may play a role in kidney tumorigenesis. It is also upregulated in colon carcinoma and is thought to play a role in cell proliferation and cell aggregation, suggesting that TTYH2 may play a role in regulating both proliferation and metastatic potentials of colorectal cancer. The ubiquitin-protein ligase Nedd4-2 binds to and ubiquitinates TTYH2, thereby regulating its cell surface expression and total cellular levels.
Synonyms:	C17orf29
Protein Families:	Transmembrane

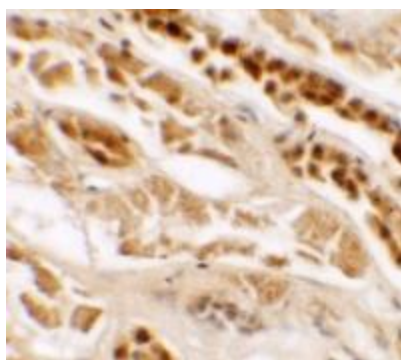


[View online »](#)

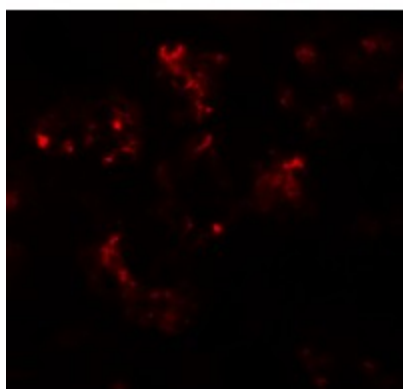
## Product images:



Western blot analysis of TTYH2 in human kidney tissue lysate with TTYH2 antibody at 1 ug/ml



Immunohistochemistry of TTYH2 in human kidney tissue with TTYH2 antibody at 2.5 ug/mL.



Immunofluorescence of TTYH2 in human kidney tissue with TTYH2 antibody at 20 ug/mL.