

Product datasheet for **TA320077**

LEMD1 Rabbit Polyclonal Antibody

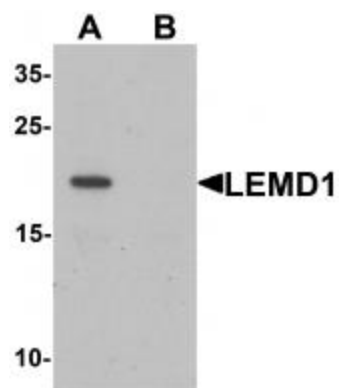
Product data:

Product Type:	Primary Antibodies
Applications:	WB
Recommended Dilution:	WB: 1 ug/mL
Reactivity:	Human, Mouse
Host:	Rabbit
Isotype:	IgG
Clonality:	Polyclonal
Immunogen:	LEMD1 antibody was raised against a 19 amino acid synthetic peptide near the center of human LEMD1.
Formulation:	LEMD1 Antibody is supplied in PBS containing 0.02% sodium azide.
Concentration:	1ug/ul
Purification:	LEMD1 Antibody is affinity chromatography purified via peptide column.
Conjugation:	Unconjugated
Storage:	Store at -20°C as received.
Stability:	Stable for 12 months from date of receipt.
Gene Name:	LEM domain containing 1
Database Link:	NP_001001552 Entrez Gene 213409 Mouse Entrez Gene 93273 Human Q68G75
Background:	LEMD1 Antibody: LEMD1 (LEM domain-containing1) is a member of cancer-testis gene family. LEMD1 is normally expressed only in testis. Six alternatively spliced forms of LEMD1 transcripts in normal testis have been identified, but only one of the six was expressed in colorectal cancers. LEMD1 may represent a promising target antigen for immunotherapy of colorectal cancers. In addition, LEMD1 and SPATA19 are putative cancer biomarkers and promising targets for active immunotherapy.
Synonyms:	CT50; LEMP-1



[View online »](#)

Product images:



Western blot analysis of LEMD1 in A20 cell lysate with LEMD1 antibody at 1 ug/mL in (A) the absence and (B) the presence of blocking peptide.