

Product datasheet for **TA320074**

TMEM88 Rabbit Polyclonal Antibody

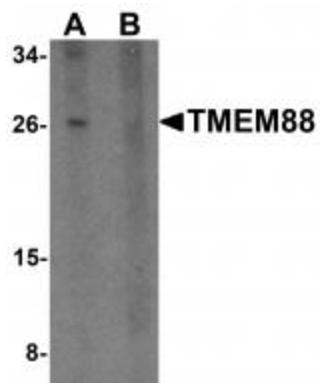
Product data:

Product Type:	Primary Antibodies
Applications:	IF, IHC, WB
Recommended Dilution:	WB: 1 ug/mL, ICC: 2.5 ug/mL, IF: 20 ug/mL
Reactivity:	Human, Mouse, Rat
Host:	Rabbit
Isotype:	IgG
Clonality:	Polyclonal
Immunogen:	TMEM88 antibody was raised against a 19 amino acid synthetic peptide near the carboxy terminus of human TMEM88.
Formulation:	TMEM88 Antibody is supplied in PBS containing 0.02% sodium azide.
Concentration:	1ug/ul
Purification:	TMEM88 Antibody is affinity chromatography purified via peptide column.
Conjugation:	Unconjugated
Storage:	Store at -20°C as received.
Stability:	Stable for 12 months from date of receipt.
Gene Name:	transmembrane protein 88
Database Link:	NP_981956 Entrez Gene 67020 Mouse Entrez Gene 497936 Rat Entrez Gene 92162 Human Q6PEY1
Background:	TMEM88 Antibody: Transmembrane protein 88 (TMEM88) is a two-transmembrane-type protein whose C-terminal tail has been shown to bind the PDZ domain of Dishevelled (Dvl), one of the key components in Wnt signaling pathways. TMEM88 attenuated the Wnt/beta-catenin signaling induced by Wnt-1 ligand in a dose-dependent manner and knockdown of TMEM88 by RNAi increased Wnt activity, suggesting that TMEM88 plays a role in regulating Wnt signaling in a context-dependent manner.
Synonyms:	FLJ20025; MGC71744
Protein Families:	Transmembrane

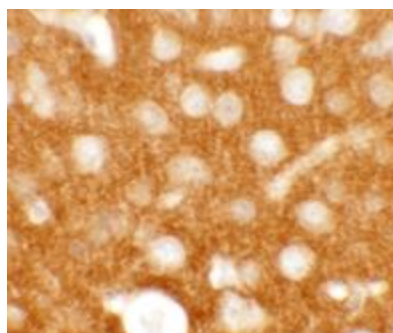


[View online »](#)

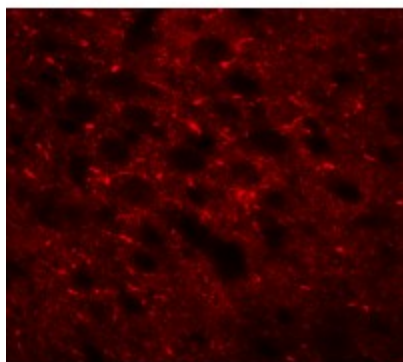
Product images:



Western blot analysis of TMEM88 in human brain tissue lysate with TMEM88 antibody at 1 ug/mL in (A) the absence and (B) the presence of blocking peptide.



Immunohistochemistry of TMEM88 in mouse brain tissue with TMEM88 antibody at 2.5 ug/mL.



Immunofluorescence of TMEM88 in mouse brain tissue with TMEM88 antibody at 20 ug/mL.