

## Product datasheet for **TA320073**

### NALP12 (NLRP12) Rabbit Polyclonal Antibody

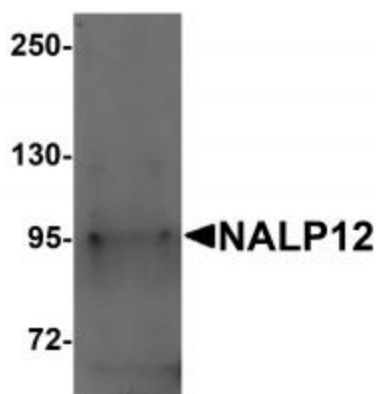
#### Product data:

Product Type:	Primary Antibodies
Applications:	IF, IHC, WB
Recommended Dilution:	WB: 1 ug/mL, ICC: 5 ug/mL, IF: 20 ug/mL
Reactivity:	Human, Mouse, Rat
Host:	Rabbit
Isotype:	IgG
Clonality:	Polyclonal
Immunogen:	NALP12 antibody was raised against an 18 amino acid synthetic peptide near the amino terminus of human NALP12.
Formulation:	NALP12 Antibody is supplied in PBS containing 0.02% sodium azide.
Concentration:	1ug/ul
Purification:	NALP12 Antibody is affinity chromatography purified via peptide column.
Conjugation:	Unconjugated
Storage:	Store at -20°C as received.
Stability:	Stable for 12 months from date of receipt.
Gene Name:	NLR family, pyrin domain containing 12
Database Link:	<a href="#">NP_653288</a> <a href="#">Entrez Gene 91662 Human P59046</a>
Background:	NALP12 Antibody: NALP proteins are cytoplasmic proteins that form a subfamily within the larger CATERPILLER family and are thought to play a crucial role in cell proliferation and reproduction. Like all other NALP family members, NALP12, also known as Monarch-1, has a C-terminal leucine-rich repeat (LRR) region, an N-terminal Pyrin domain (PYD) followed by a NACHT domain, and a NACHT-associated domain. NALP12 is thought to act as an attenuating factor of inflammation by suppressing inflammatory responses such as NF-κB activation by TLR-signaling molecules MyD88, IRAK-1, TRAF6 and RIPK1 in activated monocytes. Recent evidence suggests that mutations in NALP12 result in hereditary periodic fever syndromes.
Synonyms:	CLR19.3; FCAS2; NALP12; PAN6; PYPAF7; RNO; RNO2

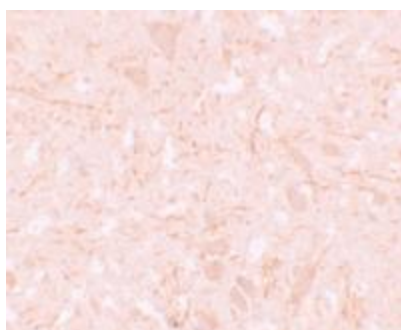


[View online »](#)

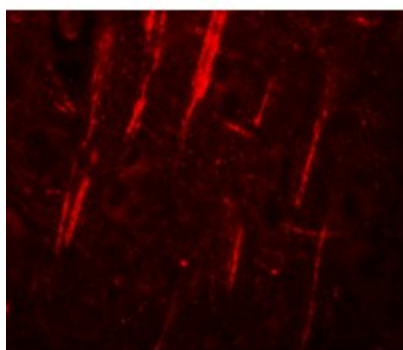
## Product images:



Western blot analysis of NALP12 in human brain tissue lysate with NALP12 antibody at 1 ug/mL.



Immunohistochemistry of NALP12 in human brain tissue with NALP12 antibody at 5 ug/mL.



Immunofluorescence of NALP12 in human brain tissue with NALP12 antibody at 20 ug/mL.