

Product datasheet for **TA320072**

Solo (SESTD1) Rabbit Polyclonal Antibody

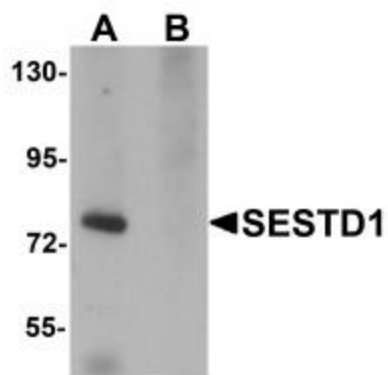
Product data:

Product Type:	Primary Antibodies
Applications:	IF, IHC, WB
Recommended Dilution:	WB: 1 ug/mL, ICC: 5 ug/mL, IF: 20 ug/mL
Reactivity:	Human, Mouse, Rat
Host:	Rabbit
Isotype:	IgG
Clonality:	Polyclonal
Immunogen:	SESTD1 antibody was raised against a 15 amino acid synthetic peptide near the carboxy terminus of human SESTD1.
Formulation:	SESTD1 Antibody is supplied in PBS containing 0.02% sodium azide.
Concentration:	1ug/ul
Purification:	SESTD1 Antibody is affinity chromatography purified via peptide column.
Conjugation:	Unconjugated
Storage:	Store at -20°C as received.
Stability:	Stable for 12 months from date of receipt.
Gene Name:	SEC14 and spectrin domain containing 1
Database Link:	NP_835224 Entrez Gene 228071 Mouse Entrez Gene 295678 Rat Entrez Gene 91404 Human Q86VW0
Background:	SESTD1 Antibody: SESTD1 was initially identified in mutant zebrafish with defects in the spontaneous contraction and touch response as a novel gene, solo, encoding a protein containing SEC14 and spectrin repeat domains. Other experiments indicated that SESTD1 interacts with the TRPC4 and TRPC5, members of the transient receptor potential channel family, via the TRPC calmodulin- and inositol 1, 4, 5-triphosphate receptor-binding domain and is essential for efficient receptor-mediated activation of TRPC5, suggesting that SESTD1 is a novel regulator of these TRPC proteins.
Synonyms:	SOLO
Protein Families:	Druggable Genome

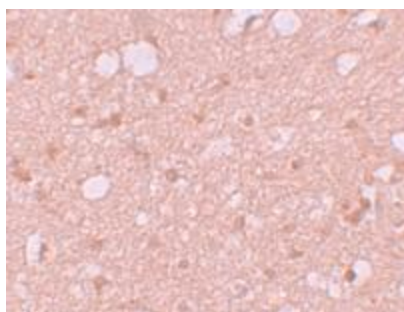


[View online »](#)

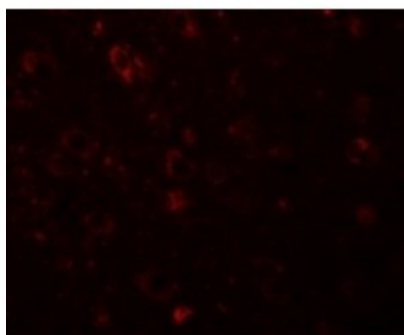
Product images:



Western blot analysis of SESTD1 in rat brain tissue lysate with SESTD1 antibody at 1 ug/mL in (A) the absence and (B) the presence of blocking peptide.



Immunohistochemistry of SESTD1 in human brain tissue with SESTD1 antibody at 5 ug/mL.



Immunofluorescence of SESTD1 in Human Brain cells with SESTD1 antibody at 20 ug/mL.