

Product datasheet for **TA320071**

SLC39A13 Rabbit Polyclonal Antibody

Product data:

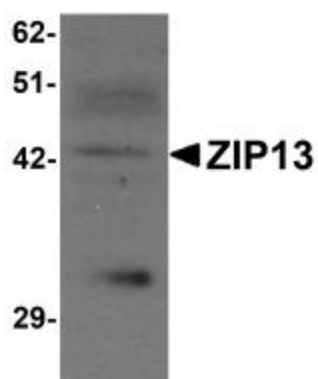
Product Type:	Primary Antibodies
Applications:	IF, IHC, WB
Recommended Dilution:	WB: 1 ug/mL, ICC: 2.5 ug/mL, IF: 20 ug/mL
Reactivity:	Human
Host:	Rabbit
Isotype:	IgG
Clonality:	Polyclonal
Immunogen:	ZIP13 antibody was raised against a 14 amino acid synthetic peptide near the amino terminus of human ZIP13.
Formulation:	ZIP13 Antibody is supplied in PBS containing 0.02% sodium azide.
Concentration:	1ug/ul
Purification:	ZIP13 Antibody is affinity chromatography purified via peptide column.
Conjugation:	Unconjugated
Storage:	Store at -20°C as received.
Stability:	Stable for 12 months from date of receipt.
Gene Name:	solute carrier family 39 member 13
Database Link:	NP_001121697 Entrez Gene 91252 Human Q96H72
Background:	ZIP13 Antibody: The zinc transporter ZIP13, also known as SLC39A13, is a member of a family of divalent ion transporters. Zinc is an essential ion for cells and plays significant roles in the growth, development, and differentiation. The zinc transporter family is divided into four subfamilies (I, II, LIV-1 and gufA). ZIP13 is a multipass membrane protein that belongs to the ZIP transporter subfamily LIV-1. Mutations in ZIP13 have recently been shown to cause a spondylocheiro dysplastic form of Ehlers-Danlos syndrome (SCD-EDS), a generalized skeletal dysplasia involving mainly the spine with clinical abnormalities of the hands in addition to EDS-like features. Other experiments have shown that ZIP13 is required for proper connective tissue development and is involved in BMP/TGF- signaling pathways.



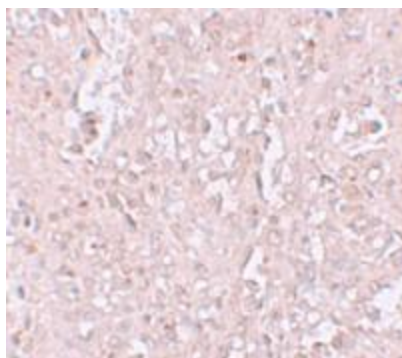
[View online »](#)

Synonyms: LZT-Hs9

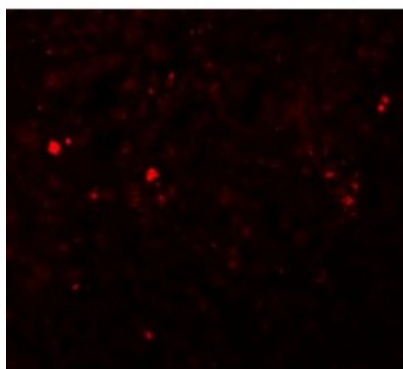
Product images:



Western blot analysis of ZIP13 in K562 cell lysate with ZIP13 antibody at 1 ug/mL.



Immunohistochemistry of ZIP13 in human spleen tissue with ZIP13 antibody at 2.5 ug/mL.



Immunofluorescence of ZIP13 in human spleen tissue with ZIP13 antibody at 20 ug/mL.