

## Product datasheet for **TA320068**

### MLIP Rabbit Polyclonal Antibody

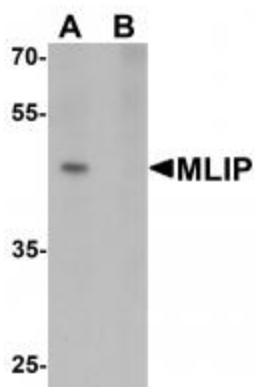
#### Product data:

Product Type:	Primary Antibodies
Applications:	IF, IHC, WB
Recommended Dilution:	WB: 1 ug/mL, ICC: 5 ug/mL, IF: 20 ug/mL
Reactivity:	Human
Host:	Rabbit
Isotype:	IgG
Clonality:	Polyclonal
Immunogen:	MLIP antibody was raised against a 16 amino acid synthetic peptide near the carboxy terminus of human MLIP.
Formulation:	MLIP Antibody is supplied in PBS containing 0.02% sodium azide.
Concentration:	1ug/ul
Purification:	MLIP Antibody is affinity chromatography purified via peptide column.
Conjugation:	Unconjugated
Storage:	Store at -20°C as received.
Stability:	Stable for 12 months from date of receipt.
Gene Name:	muscular LMNA-interacting protein
Database Link:	<a href="#">NP_612636</a> <a href="#">Entrez Gene 90523 Human</a> <a href="#">Q5VWP3</a>
Background:	MLIP Antibody: The muscle-enriched A-type lamin-interacting protein (MLIP) is ubiquitously expressed, although most predominantly in heart, skeletal and smooth muscle, and interacts directly and co-localizes with lamin A and C in the nuclear envelope. MLIP also co-localizes with promyelocytic leukemia (PML) bodies within the nucleus. Decreasing lamin A/C expression with siRNA results in the upregulation and mislocalization of MLIP, suggesting that MLIP localization to the nuclear envelope is dependent on the lamin proteins. It has been suggested that MLIP may function as a tethering protein linking LMNA to factors within the nuclear envelope of within PML bodies
Synonyms:	C6orf142; CIP

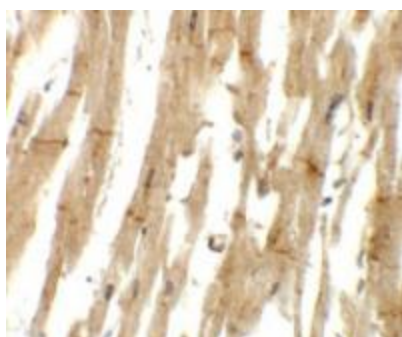


[View online »](#)

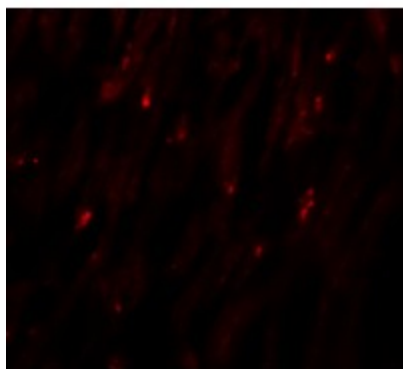
## Product images:



Western blot analysis of MLIP in 293 cell lysate with MLIP antibody at 1 ug/mL in (A) the absence and (B) the presence of blocking peptide.



Immunohistochemistry of MLIP in human heart tissue with MLIP antibody at 5 ug/mL.



Immunofluorescence of MLIP in human heart tissue with MLIP antibody at 20 ug/mL.