

## Product datasheet for **TA320067**

### SCRN2 Rabbit Polyclonal Antibody

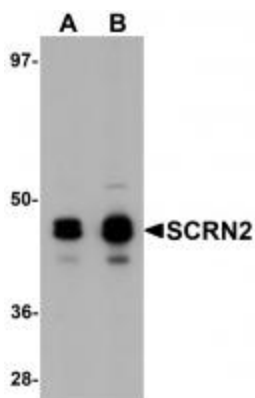
#### Product data:

Product Type:	Primary Antibodies
Applications:	IF, WB
Recommended Dilution:	WB: 0.5 - 1 ug/mL, ICC: 20 ug/mL, IF: 20 ug/mL
Reactivity:	Human, Mouse, Rat
Host:	Rabbit
Isotype:	IgG
Clonality:	Polyclonal
Immunogen:	SCRN2 antibody was raised against an 18 amino acid synthetic peptide near the carboxy terminus of human SCRIN2.
Formulation:	SCRN2 Antibody is supplied in PBS containing 0.02% sodium azide.
Concentration:	1ug/ul
Purification:	SCRN2 Antibody is affinity chromatography purified via peptide column.
Conjugation:	Unconjugated
Storage:	Store at -20°C as received.
Stability:	Stable for 12 months from date of receipt.
Gene Name:	secernin 2
Database Link:	<a href="#">NP_612364</a> <a href="#">Entrez Gene 217140 Mouse</a> <a href="#">Entrez Gene 360612 Rat</a> <a href="#">Entrez Gene 90507 Human</a> <a href="#">Q96FV2</a>
Background:	SCRN2 Antibody: SCRIN2 is a member of the secernin family of proteins which includes the homologous SCRIN1, a protein that was first identified as being involved in the regulation of exocytosis from peritoneal mast cells. Little is known of SCRIN2, but studies have shown that SCRIN1 may possess epitopes that function as tumor-associated antigens in gastric cancers and increased SCRIN1 expression in patients with colorectal cancer correlated with poor prognosis, suggesting that SCRIN2 may also be involved in protein secretion or the regulation of cell growth.
Synonyms:	Ses2

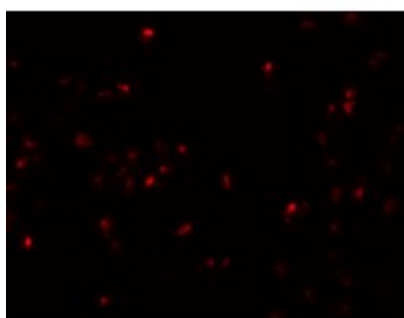


[View online »](#)

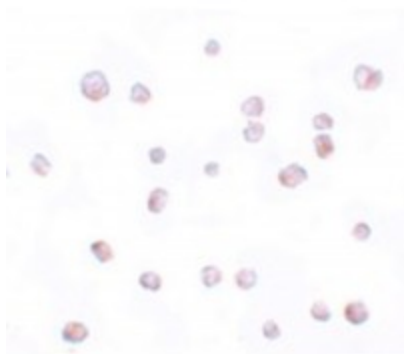
## Product images:



Western blot analysis of SCRN2 in 293 cell tissue lysate with SCRN2 antibody at (A) 0.5 and (B) 1 ug/mL.



Immunofluorescence of SCRN2 in 293 cells with SCRN2 antibody at 20 ug/mL.



Immunocytochemistry of SCRN2 in 293 cells with SCRN2 antibody at 20 ug/mL.