

Product datasheet for **TA320066**

SLAMF9 Rabbit Polyclonal Antibody

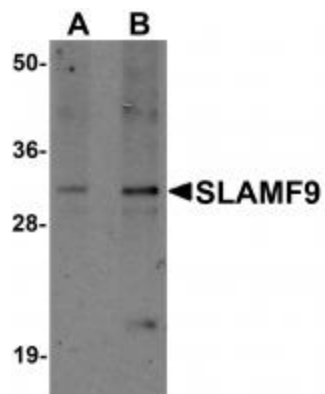
Product data:

Product Type:	Primary Antibodies
Applications:	IF, IHC, WB
Recommended Dilution:	WB: 1 - 2 ug/mL, ICC: 2.5 ug/mL, IF: 20 ug/mL
Reactivity:	Human, Mouse, Rat
Host:	Rabbit
Isotype:	IgG
Clonality:	Polyclonal
Immunogen:	SLAMF9 antibody was raised against a 19 amino acid synthetic peptide near the carboxy terminus of human SLAMF9.
Formulation:	SLAMF9 Antibody is supplied in PBS containing 0.02% sodium azide.
Concentration:	1ug/ul
Purification:	SLAMF9 Antibody is affinity chromatography purified via peptide column.
Conjugation:	Unconjugated
Storage:	Store at -20°C as received.
Stability:	Stable for 12 months from date of receipt.
Gene Name:	SLAM family member 9
Database Link:	NP_001139645 Entrez Gene 89886 Human Q96A28
Background:	SLAMF9 Antibody: The SLAM (signalling lymphocyte activation molecule) family is a novel group of receptors on T cells in modulating the immune response. SLAMF9, also known as CD2F-10 or CD84 homolog, is a 289 amino acid type I transmembrane protein that shares 58% identity with the mouse protein. The SLAMF9 protein is predominantly expressed in hematopoietic tissues and contains an extracellular region with only two N-linked glycosylation sites, a 20-residue transmembrane region and a highly positively charged 30-residue cytoplasmic tail, suggesting a role for SLAMF9 as an adhesion molecule. SLAMF9 is thought to function in the immune response as a coreceptor for lymphocyte activation.
Synonyms:	CD2F-10; CD2F10; CD84-H1; CD84H1; SF2001

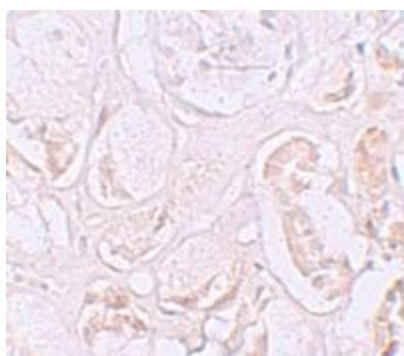


[View online »](#)

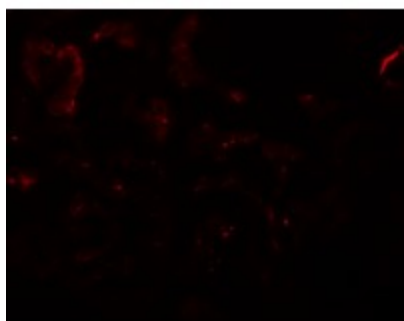
Product images:



Western blot analysis of SLAMF9 in mouse kidney tissue lysate with SLAMF9 antibody at (A) 1 and (B) 2 ug/mL.



Immunohistochemistry of SLAMF9 in human kidney tissue with SLAMF9 antibody at 2.5 ug/mL.



Immunofluorescence of SLAMF9 in human kidney tissue with SLAMF9 antibody at 20 ug/mL.