

## Product datasheet for **TA320065**

### FCHSD1 Chicken Polyclonal Antibody

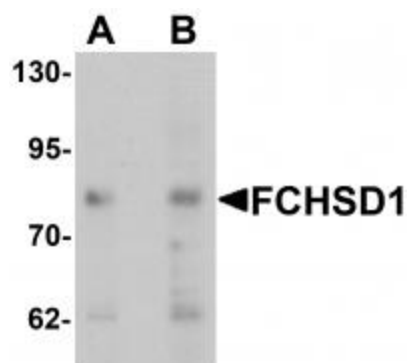
#### Product data:

Product Type:	Primary Antibodies
Applications:	WB
Recommended Dilution:	WB: 0.5 - 1 ug/mL
Reactivity:	Human, Mouse
Host:	Chicken
Isotype:	IgY
Clonality:	Polyclonal
Immunogen:	FCHSD1 antibody was raised against a 15 amino acid synthetic peptide near the carboxy terminus of human FCHSD1.
Formulation:	FCHSD1 Antibody is supplied in PBS containing 0.02% sodium azide.
Concentration:	1ug/ul
Purification:	FCHSD1 Antibody is affinity chromatography purified via peptide column.
Conjugation:	Unconjugated
Storage:	Store at -20°C as received.
Stability:	Stable for 12 months from date of receipt.
Gene Name:	FCH and double SH3 domains 1
Database Link:	<a href="#">NP_258260</a> <a href="#">Entrez Gene 319262 Mouse</a> <a href="#">Entrez Gene 89848 Human</a> <a href="#">Q86WN1</a>
Background:	FCHSD1 Antibody: The FCH and double SH3 domains protein 1 (FCHSD1, also known as NWK2) and the related protein FCHSD2 were initially identified in silico as distantly related proteins to FNBP1 and FNBP2. Both share the common domain structure consisting of FCH, FBH, two SH3 and C-terminal proline-rich domains. While little is known of the function of FCHSD1, the related protein NWK is an adaptor protein that is thought to regulate Rho activity downstream of Robo receptors, suggesting that FCHSD1 may be involved in synaptic morphology by regulating actin dynamics in presynaptic terminals.
Synonyms:	NWK2



[View online »](#)

## Product images:



Western blot analysis of FCHSD1 in MCF7 cell lysate with FCHSD1 antibody at (A) 0.5 and (B) 1 ug/mL.