

## Product datasheet for **TA320062**

### Dispatched (DISP1) Rabbit Polyclonal Antibody

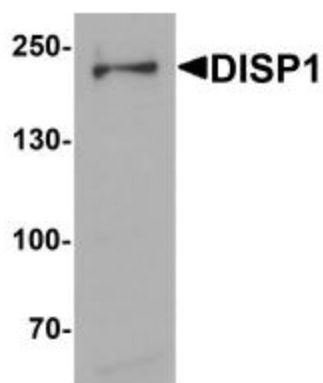
#### Product data:

Product Type:	Primary Antibodies
Applications:	IF, IHC, WB
Recommended Dilution:	WB: 1 - 2 ug/mL, ICC: 2.5 ug/mL, IF: 20 ug/mL
Reactivity:	Human, Mouse
Host:	Rabbit
Isotype:	IgG
Clonality:	Polyclonal
Immunogen:	DISP1 antibody was raised against a 16 amino acid synthetic peptide near the amino terminus of human DISP1.
Formulation:	DISP1 Antibody is supplied in PBS containing 0.02% sodium azide.
Concentration:	1 mg/ml
Purification:	DISP1 Antibody is affinity chromatography purified via peptide column.
Conjugation:	Unconjugated
Storage:	Store at -20°C as received.
Stability:	Stable for 12 months from date of receipt.
Gene Name:	dispatched RND transporter family member 1
Database Link:	<a href="#">NP_116279</a> <a href="#">Entrez Gene 68897 Mouse</a> <a href="#">Entrez Gene 84976 Human</a> <a href="#">Q96F81</a>
Background:	DISP1 Antibody: DISP1 is the mammalian homolog of the Drosophila Dispatched segment-polarity gene and a key regulator of the Hedgehog (Hh) signaling pathway during embryonic development. DISP1 is required to move Shh from site of synthesis during embryogenesis; mutations in the gene result in lethality at mid-gestation and prevents specification of ventral cell types in the neural tube. Recent results have shown that DISP1 mediates the basolateral secretion of Shh and regulates growth of mammalian long bones through the control of Ihh.
Synonyms:	DISPA
Protein Families:	Transmembrane

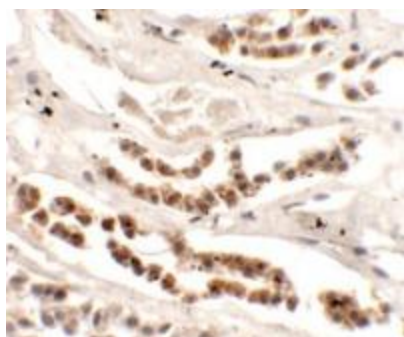


[View online »](#)

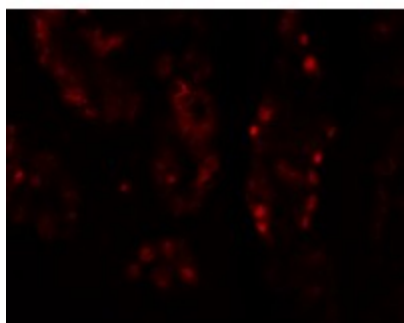
## Product images:



Western blot analysis of DISP1 in 3T3 cell lysate with DISP1 antibody at (A) 1 and (B) 2 ug/mL.



Immunohistochemistry of DISP1 in human kidney tissue with DISP1 antibody at 2.5 ug/mL.



Immunofluorescence of DISP1 in human kidney tissue with DISP1 antibody at 20 ug/mL.