

Product datasheet for **TA320061**

SPRYD3 Rabbit Polyclonal Antibody

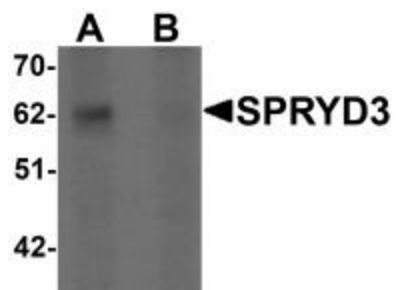
Product data:

Product Type:	Primary Antibodies
Applications:	IF, IHC, WB
Recommended Dilution:	WB: 1 ug/mL, ICC: 5 ug/mL, IF: 20 ug/mL
Reactivity:	Human, Mouse, Rat
Host:	Rabbit
Isotype:	IgG
Clonality:	Polyclonal
Immunogen:	SPRYD3 antibody was raised against a 16 amino acid synthetic peptide near the center of human SPRYD3.
Formulation:	SPRYD3 Antibody is supplied in PBS containing 0.02% sodium azide.
Concentration:	1ug/ul
Purification:	SPRYD3 Antibody is affinity chromatography purified via peptide column.
Conjugation:	Unconjugated
Storage:	Store at -20°C as received.
Stability:	Stable for 12 months from date of receipt.
Gene Name:	SPRY domain containing 3
Database Link:	NP_116229 Entrez Gene 223918 Mouse Entrez Gene 315327 Rat Entrez Gene 84926 Human Q8NCJ5
Background:	SPRYD3 Antibody: The SPRY domain-containing protein 3 (SPRYD3) is a member of a family of proteins whose sole common characteristic is the presence of a SPRY domain. SPRY domains are structural domains that were first described in the fungal Dictyostelium discoideum tyrosine kinase spore lysis A. In most systems SPRY domains provide binding sites for regulatory proteins or intramolecular binding sites that maintain the structural integrity of a protein. Little is known of the function of the SPRYD3 protein.
Synonyms:	FLJ14800
Protein Families:	Druggable Genome

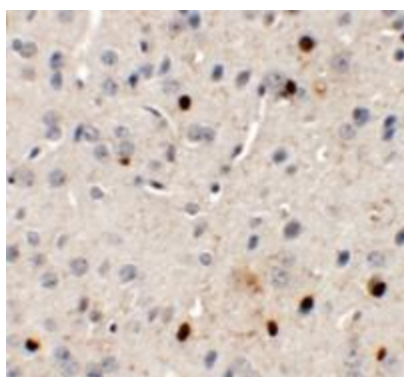


[View online »](#)

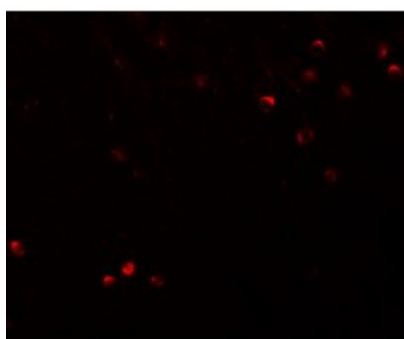
Product images:



Western blot analysis of SPRYD3 in human brain tissue lysate with SPRYD3 antibody at 1 ug/mL in (A) the absence and (B) the presence of blocking peptide



Immunohistochemistry of SPRYD3 in mouse brain tissue with SPRYD3 antibody at 5 ug/mL.



Immunofluorescence of SPRYD3 in mouse brain tissue with SPRYD3 antibody at 20 ug/mL.