

Product datasheet for **TA320060**

ORAI1 Mouse Monoclonal Antibody [Clone ID: 6D11A11]

Product data:

Product Type:	Primary Antibodies
Clone Name:	6D11A11
Applications:	IF, IHC, WB
Recommended Dilution:	WB: 1 - 2 ug/mL, ICC: 2.5 ug/mL, IF: 20 ug/mL
Reactivity:	Human, Mouse, Rat
Host:	Mouse
Isotype:	IgG2b
Clonality:	Monoclonal
Immunogen:	Mouse monoclonal ORAI1 antibody was raised against a 16 amino acid synthetic peptide from near the carboxy terminus of human ORAI1.
Formulation:	ORAI1 Monoclonal Antibody is supplied in PBS containing 0.02% sodium azide.
Concentration:	1 mg/ml
Purification:	ORAI1 Monoclonal Antibody is immunoaffinity chromatography purified IgG.
Conjugation:	Unconjugated
Storage:	Store at -20°C as received.
Stability:	Stable for 12 months from date of receipt.
Gene Name:	ORAI calcium release-activated calcium modulator 1
Database Link:	NP_116179 Entrez Gene 109305 MouseEntrez Gene 304496 RatEntrez Gene 84876 Human Q96D31



[View online »](#)

Background:

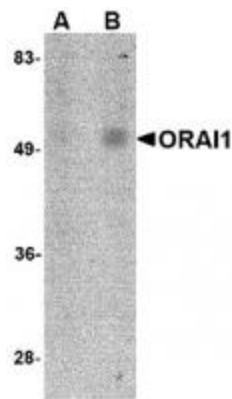
ORAI1 Monoclonal Antibody: Antigen stimulation of immune cells triggers Ca^{++} entry through Ca^{++} release-activated Ca^{++} (CRAC) channels. ORAI1 is a recently identified four-transmembrane spanning protein that is an essential component of CRAC. A missense mutation in this protein in humans is the cause of one form of hereditary severe combined immune deficiency (SCID) which results in ablated T-cell Ca^{++} entry. It has been suggested that ORAI1 functions as a highly selective Ca^{++} plasma membrane channel that is gated through interactions with STIM1, the store-activated endoplasmic reticulum Ca^{++} sensor. ORAI1 often migrates at a higher than expected molecular weight in SDS-PAGE. This antibody is predicted to have no cross-reactivity to ORAI2 or ORAI3.

Synonyms:

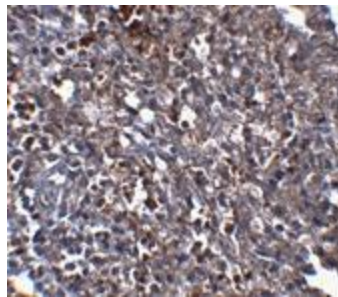
CRACM1; IMD9; ORAT1; TAM2; TMEM142A

Protein Families:

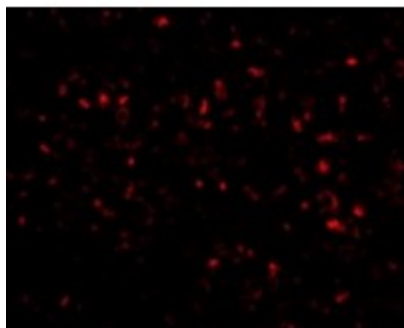
Transmembrane

Product images:

Western blot analysis of ORAI1 in human spleen tissue lysate with ORAI1 antibody at (A) 1 and (B) 2 $\mu\text{g}/\text{mL}$.



Immunohistochemistry of ORAI1 in human spleen tissue with ORAI1 antibody at 2.5 $\mu\text{g}/\text{mL}$.



Immunofluorescence of ORAI1 in Human Spleen tissue with ORAI1 antibody at 20 ug/mL.