

Product datasheet for **TA320058**

SPRYD5 (TRIM51) Rabbit Polyclonal Antibody

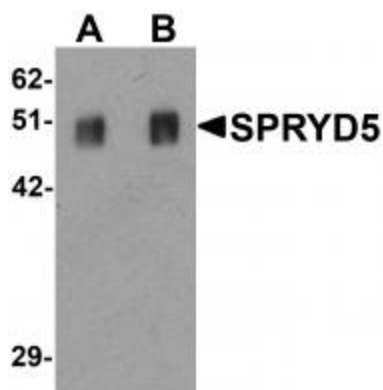
Product data:

Product Type:	Primary Antibodies
Applications:	IF, IHC, WB
Recommended Dilution:	WB: 0.25 - 0.5 ug/mL, ICC: 5 ug/mL, IF: 20 ug/mL
Reactivity:	Human, Mouse, Rat
Host:	Rabbit
Isotype:	IgG
Clonality:	Polyclonal
Immunogen:	SPRYD5 antibody was raised against an 18 amino acid synthetic peptide near the carboxy terminus of human SPRYD5.
Formulation:	SPRYD5 Antibody is supplied in PBS containing 0.02% sodium azide.
Concentration:	1ug/ul
Purification:	SPRYD5 Antibody is affinity chromatography purified via peptide column.
Conjugation:	Unconjugated
Storage:	Store at -20°C as received.
Stability:	Stable for 12 months from date of receipt.
Gene Name:	tripartite motif-containing 51
Database Link:	NP_116070 Entrez Gene 84767 Human Q9BSJ1
Background:	SPRYD5 Antibody: The SPRY domain-containing protein 5 (SPRYD5) is a member of a family of proteins whose sole common characteristic is the presence of a SPRY domain. SPRY domains are structural domains that were first described in the fungal Dictyostelium discoideum tyrosine kinase spore lysis A. In most systems SPRY domains provide binding sites for regulatory proteins or intramolecular binding sites that maintain the structural integrity of a protein. SPRYD5 belongs to the TRIM/RBCC family and contains one B box-type zinc finger, one B30.2/SPRY domain and one RING-type zinc finger. Little is known of the function of the SPRYD5 protein.
Synonyms:	SPRYD5; TRIM51A

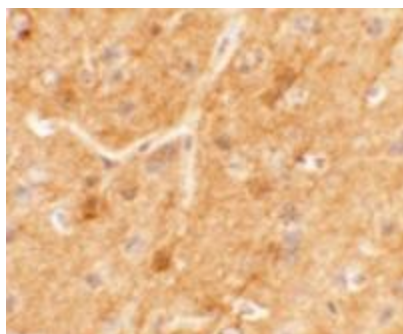

[View online »](#)

Protein Families: Druggable Genome

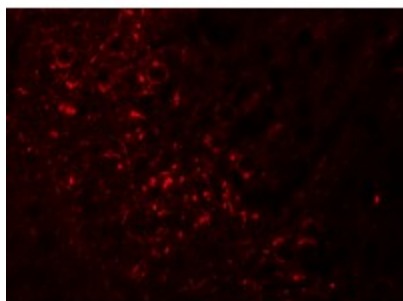
Product images:



Western blot analysis of SPRYD5 in rat brain tissue lysate with SPRYD5 antibody at (A) 0.25 and (B) 0.5 ug/mL.



Immunohistochemistry of SPRYD5 in mouse brain tissue with SPRYD5 antibody at 5 ug/mL.



Immunofluorescence of SPRYD5 in mouse brain tissue with SPRYD5 antibody at 20 ug/mL.