

## Product datasheet for **TA320056**

### HRP2 (HDGFRP2) Rabbit Polyclonal Antibody

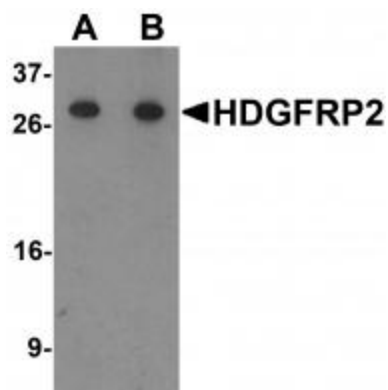
#### Product data:

Product Type:	Primary Antibodies
Applications:	IF, IHC, WB
Recommended Dilution:	WB: 0.5 - 1 ug/mL, ICC: 5 ug/mL, IF: 20 ug/mL
Reactivity:	Human, Mouse, Rat
Host:	Rabbit
Isotype:	IgG
Clonality:	Polyclonal
Immunogen:	HDGFRP2 antibody was raised against an 18 amino acid synthetic peptide near the amino terminus of human HDGFRP2.
Formulation:	HDGFRP2 Antibody is supplied in PBS containing 0.02% sodium azide.
Concentration:	1ug/ul
Purification:	HDGFRP2 Antibody is affinity chromatography purified via peptide column.
Conjugation:	Unconjugated
Storage:	Store at -20°C as received.
Stability:	Stable for 12 months from date of receipt.
Gene Name:	HDGF like 2
Database Link:	<a href="#">NP_116020</a> <a href="#">Entrez Gene 15193 Mouse</a> <a href="#">Entrez Gene 171073 Rat</a> <a href="#">Entrez Gene 84717 Human</a> <a href="#">Q7Z4V5</a>
Background:	HDGFRP2 Antibody: Hepatoma-derived growth factor-related protein 2 (HDGFRP2) is a widely expressed member of protein family that contains the HDGF related proteins 1-4 and lens epithelial derived growth factor (LEDGF). These family members show extensive homology at the amino terminus (termed the hath region). Little is known of the role of HDGFRP2, but like the related LEDGF, HDGFRP2 can bind HIV-1 integrase and stimulate HIV-1 integrase activity in vitro.
Synonyms:	HDGF-2; HDGF2; HRP-2

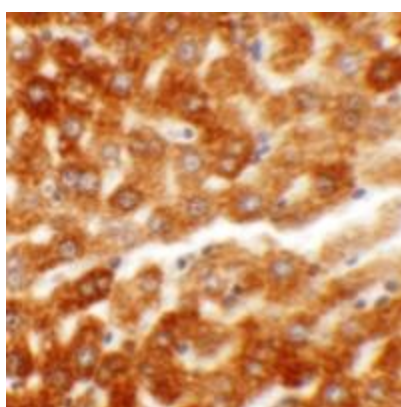


[View online »](#)

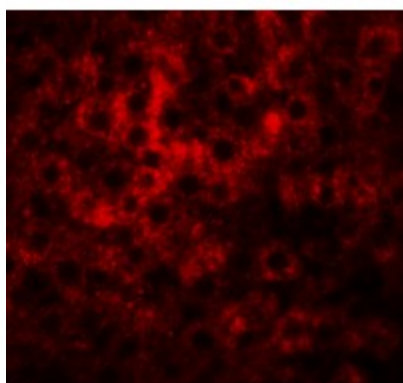
## Product images:



Western blot analysis of HDGFRP2 in rat lung tissue lysate with HDGFRP2 antibody at 1  $\mu$ g/ml.



Immunohistochemistry of HDGFRP2 in rat liver tissue with HDGFRP2 antibody at 5  $\mu$ g/mL.



Immunofluorescence of HDGFRP2 in rat liver tissue with HDGFRP2 antibody at 20  $\mu$ g/mL.