

Product datasheet for **TA320055**

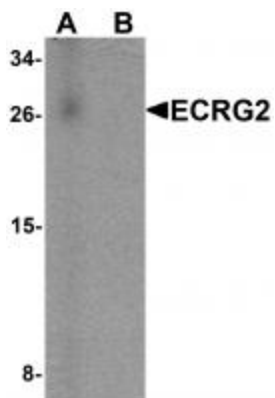
SPINK7 Chicken Polyclonal Antibody

Product data:

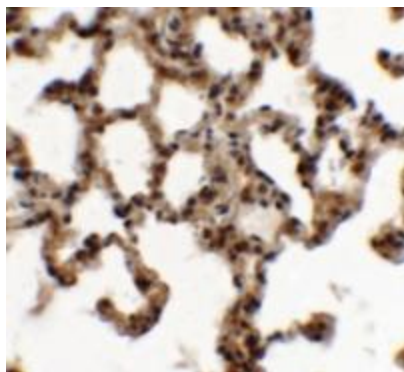
Product Type:	Primary Antibodies
Applications:	IHC, WB
Recommended Dilution:	WB: 1 ug/mL, ICC: 5 ug/mL
Reactivity:	Human, Mouse, Rat
Host:	Chicken
Isotype:	IgY
Clonality:	Polyclonal
Immunogen:	ECRG2 antibody was raised against a 16 amino acid synthetic peptide near the carboxy terminus of human ECRG2.
Formulation:	ECRG2 Antibody is supplied in PBS containing 0.02% sodium azide.
Concentration:	1ug/ul
Purification:	ECRG2 Antibody is affinity chromatography purified via peptide column.
Conjugation:	Unconjugated
Storage:	Store at -20°C as received.
Stability:	Stable for 12 months from date of receipt.
Gene Name:	serine peptidase inhibitor, Kazal type 7 (putative)
Database Link:	AAI09386 Entrez Gene 84651 Human P58062
Background:	ECRG2 Antibody: The esophageal cancer-susceptibility gene 2 (ECRG2), also known as SPINK7, is a novel tumor suppressor gene identified from the human esophagus. It interacts directly with metallothionein 2A and urokinase-type plasminogen activator (uPA), and downregulates the activity of uPA, leading to reduced cancer cell migration, invasion and metastasis. ECRG2 forms a complex with uPA and its receptor uPAR, modifying the dynamic association of uPAR with beta1 integrins and disrupting the Src/MAP kinase pathway that normally stimulates cell migration and invasion. ECRG2 may thus represent a novel therapeutic target for cancer.
Synonyms:	ECG2; ECRG2



[View online »](#)

Product images:

Western blot analysis of ECRG2 in human lung tissue lysate with ECRG2 antibody at 1 ug/mL in (A) the absence and (B) the presence of blocking peptide.



Immunohistochemistry of ECRG2 in rat lung tissue with ECRG2 antibody at 5 ug/mL.