

Product datasheet for **TA320054**

ZGPAT Chicken Polyclonal Antibody

Product data:

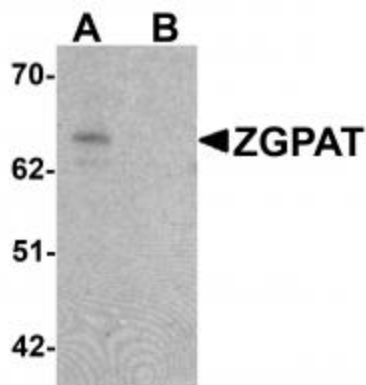
Product Type:	Primary Antibodies
Applications:	IF, WB
Recommended Dilution:	WB: 1 ug/mL, IF: 20 ug/mL
Reactivity:	Human
Host:	Chicken
Isotype:	IgY
Clonality:	Polyclonal
Immunogen:	ZGPAT antibody was raised against a 15 amino acid synthetic peptide near the carboxy terminus of human ZGPAT.
Formulation:	ZGPAT Antibody is supplied in PBS containing 0.02% sodium azide.
Concentration:	1ug/ul
Purification:	ZGPAT Antibody is affinity chromatography purified via peptide column.
Conjugation:	Unconjugated
Storage:	Store at -20°C as received.
Stability:	Stable for 12 months from date of receipt.
Gene Name:	zinc finger CCCH-type and G-patch domain containing
Database Link:	NP_115916 Entrez Gene 84619 Human Q8N5A5
Background:	ZGPAT Antibody: The Zinc finger CCCH-type with G patch domain-containing protein (ZGPAT), is a transcriptional repressor that regulates several cellular pathways including EGFR pathways that are involved in cell proliferation, migration and survival. ZGPAT recruits the Mi-2/NuRD complex and represses the expression of EGFR. ZGPAT is down-regulated in breast carcinomas and its expression is negatively correlated with that of EGFR, suggesting that it may be a potential target for breast cancer therapy. Multiple isoforms of ZGPAT are known to exist, including sZIP, which binds to the Mi-2/NuRD complex but lacks the DNA binding component of full-length ZGPAT, thereby antagonizing transcription repression and growth inhibition by ZGPAT.



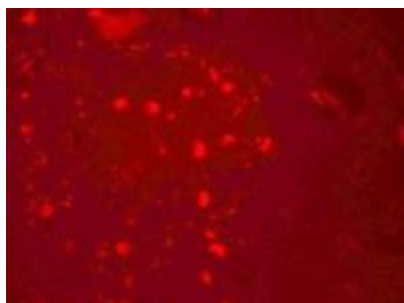
[View online »](#)

Synonyms: CCCH-type with G patch domain; GPATC6; GPATCH6; KIAA1847; MGC44880; OTTHUMP00000031593; OTTHUMP00000031594; OTTHUMP00000031596; RP4-583P15.3; ZC3H9; ZC3HDC9; zinc finger

Product images:



Western blot analysis of ZGPAT in SK-N-SH cell lysate with ZGPAT antibody at 1 ug/mL in (A) the absence and (B) the presence of blocking peptide.



Immunofluorescence of ZGPAT in human brain cells with ZGPAT antibody at 20 ug/mL.