

Product datasheet for **TA320053**

LYZL1 Rabbit Polyclonal Antibody

Product data:

Product Type:	Primary Antibodies
Applications:	WB
Recommended Dilution:	WB: 1 - 2 ug/mL
Reactivity:	Human, Mouse, Rat
Host:	Rabbit
Isotype:	IgG
Clonality:	Polyclonal
Immunogen:	LYZL1 antibody was raised against a 17 amino acid synthetic peptide near the amino terminus of human.
Formulation:	LYZL1 Antibody is supplied in PBS containing 0.02% sodium azide.
Concentration:	1ug/ul
Purification:	LYZL1 Antibody is affinity chromatography purified via peptide column.
Conjugation:	Unconjugated
Storage:	Store at -20°C as received.
Stability:	Stable for 12 months from date of receipt.
Predicted Protein Size:	21 kDa
Gene Name:	lysozyme like 1
Database Link:	NP_115906 Entrez Gene 67328 Mouse Entrez Gene 364745 Rat Entrez Gene 84569 Human Q6UWQ5
Background:	LYZL1 Antibody: The lysozyme family of proteins has an important role in host defense and is associated with the monocyte-macrophage system and enhances the activity of immunoagents. The mammalian lysozyme gene family is much larger than previously appreciated and consists of at least eight distinct genes scattered around the genome. C-type lysozymes are specifically involved catalyzing the hydrolysis of β -1,4 glycosidic bonds of the peptidoglycan of bacterial cell walls. As a homolog of human C-type lysozyme, LYZL1 is an intra-acrosomal, nonbacteriolytic, c lysozyme-like protein recently isolated from human spermatozoa.

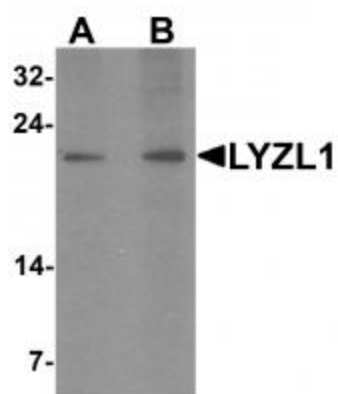


[View online »](#)

Synonyms: bA534G20.1; KAAG648; LYC2; PRO1278

Protein Families: Secreted Protein

Product images:



Western blot analysis of LYZL1 in A20 cell lysate with LYZL1 antibody at (A) 1 and (B) 2 ug/mL.