

Product datasheet for **TA320052**

GHDC Rabbit Polyclonal Antibody

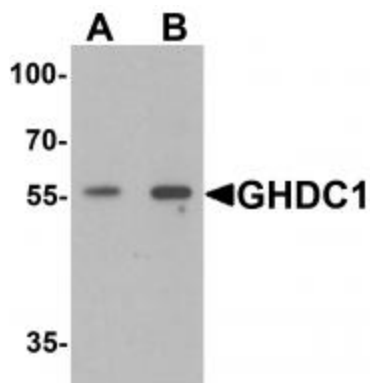
Product data:

Product Type:	Primary Antibodies
Applications:	IF, WB
Recommended Dilution:	WB: 0.5 - 1 ug/mL, IF: 20 ug/mL
Reactivity:	Human, Mouse, Rat
Host:	Rabbit
Isotype:	IgG
Clonality:	Polyclonal
Immunogen:	Rabbit polyclonal GHDC antibody was raised against a 19 amino acid peptide near the amino terminus of human GHDC.
Formulation:	GHDC Antibody is supplied in PBS containing 0.02% sodium azide.
Concentration:	1ug/ul
Purification:	GHDC Antibody is affinity chromatography purified via peptide column.
Conjugation:	Unconjugated
Storage:	Store at -20°C as received.
Stability:	Stable for 12 months from date of receipt.
Predicted Protein Size:	58 kDa
Gene Name:	GH3 domain containing
Database Link:	NP_115873 Entrez Gene 80860 MouseEntrez Gene 303542 RatEntrez Gene 84514 Human Q8N2G8
Background:	GHDC Antibody: GHDC, also known as LGP1, is a GH3 domain-containing protein that is highly expressed in normal mammary tissues and mammary tumors. GHDC is primarily located in the nuclear envelope. In mouse, its gene is located on chromosome 11 adjacent to the STAT3/5 locus. Little is known of the function of this protein.
Synonyms:	D11LGP1; LGP1

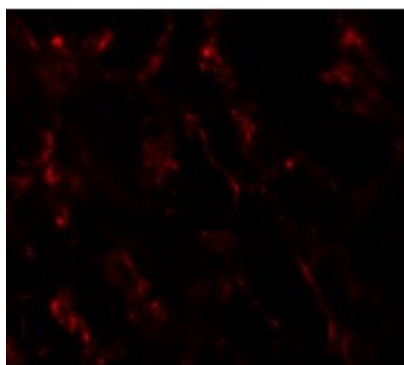


[View online »](#)

Product images:



Western blot analysis of GHDC in 293 cell lysate with GHDC antibody at (A) 0.5 and (B) 1 ug/mL.



Immunofluorescence of GHDC1 in human breast tissue with GHDC1 antibody at 20 ug/mL.