

Product datasheet for **TA320050**

LZTS2 Rabbit Polyclonal Antibody

Product data:

Product Type:	Primary Antibodies
Applications:	IF, IHC, WB
Recommended Dilution:	WB: 1 ug/mL, ICC: 2.5 ug/mL, IF: 20 ug/mL
Reactivity:	Human, Mouse
Host:	Rabbit
Isotype:	IgG
Clonality:	Polyclonal
Immunogen:	LZTS2 antibody was raised against a 19 amino acid synthetic peptide near the amino terminus of human LZTS2.
Formulation:	LZTS2 Antibody is supplied in PBS containing 0.02% sodium azide.
Concentration:	1ug/ul
Purification:	LZTS2 Antibody is affinity chromatography purified via peptide column.
Conjugation:	Unconjugated
Storage:	Store at -20°C as received.
Stability:	Stable for 12 months from date of receipt.
Gene Name:	leucine zipper, putative tumor suppressor 2
Database Link:	NP_115805 Entrez Gene 226154 Mouse Entrez Gene 84445 Human Q9BRK4
Background:	LZTS2 Antibody: The leucine zipper putative tumor suppressor 2 (LZTS2, also known as LAPSER1), a member of the LZTS family, is a negative regulator of the Wnt signaling pathway. It represses beta-catenin-mediated transcriptional activation by promoting the nuclear exclusion of beta-catenin. LZTS2 is involved in cytokinesis and regulates katanin-mediated microtubule severing and release from the centrosome. LZTS2 may negatively regulate axonal outgrowth by preventing the formation of microtubule bundles that are necessary for transport within the elongating axon. LZTS2 is highly expressed in testis and prostate, but it is deleted in multiple cancers, including prostate tumors, suggesting that LZTS2 acts as a potential tumor suppressor.

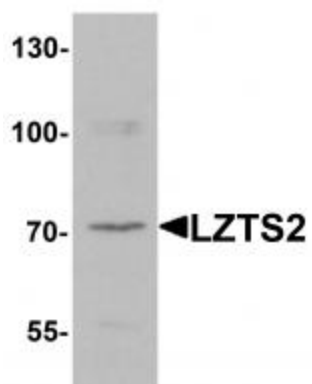


[View online »](#)

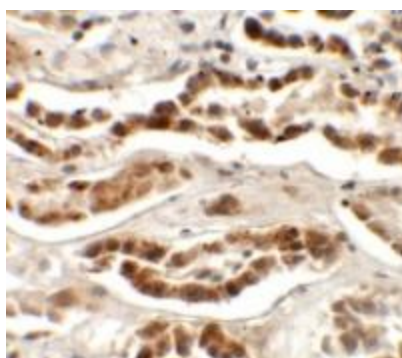
Synonyms: LAPSER1

Protein Families: Druggable Genome

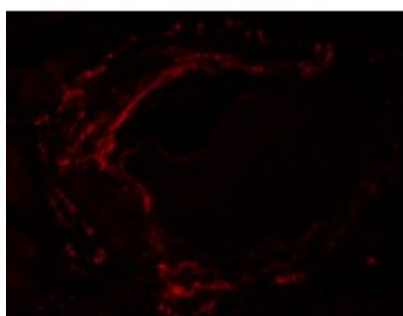
Product images:



Western blot analysis of LZTS2 in human kidney tissue lysate with LZTS2 antibody at 1 ug/mL.



Immunohistochemistry of LZTS2 in human kidney tissue with LZTS2 antibody at 2.5 ug/mL.



Immunofluorescence of LZTS2 in human kidney tissue with LZTS2 antibody at 20 ug/mL.