

Product datasheet for **TA320045**

RKHD3 (MEX3B) Rabbit Polyclonal Antibody

Product data:

Product Type:	Primary Antibodies
Applications:	IF, WB
Recommended Dilution:	WB: 1 ug/mL, IF: 20 ug/mL
Reactivity:	Human, Mouse, Rat
Host:	Rabbit
Isotype:	IgG
Clonality:	Polyclonal
Immunogen:	RKHD3 antibody was raised against a 16 amino acid synthetic peptide from near the center of human RKHD3.
Formulation:	RKHD3 Antibody is supplied in PBS containing 0.02% sodium azide.
Concentration:	1ug/ul
Purification:	RKHD3 Antibody is affinity chromatography purified via peptide column.
Conjugation:	Unconjugated
Storage:	Store at -20°C as received.
Stability:	Stable for 12 months from date of receipt.
Gene Name:	mex-3 RNA binding family member B
Database Link:	NP_780575 Entrez Gene 84206 Human Q6ZN04



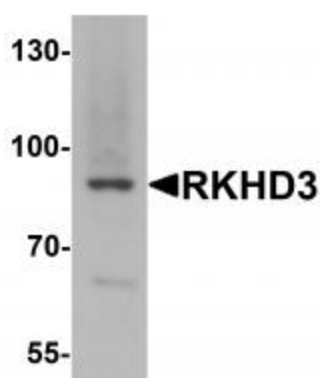
[View online »](#)

Background:

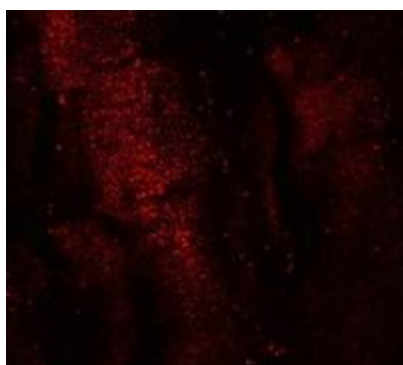
RKHD3 Antibody: Rkhd3, also known as MEX3B is a member of a novel family of four homologous human MEX3 proteins each containing two heterogeneous nuclear ribonucleoprotein K homology (KH) domains and one carboxy-terminal RING finger module. MEX3 proteins, including Rkhd3, are phosphoproteins that bind RNA through their KH domains and shuttle between the nucleus and the cytoplasm via the CRM1 export pathway. These proteins are a novel family of evolutionarily conserved RNA-binding proteins, differentially recruited to P bodies and potentially involved in post-transcriptional regulatory mechanisms. Rkhd3 is thought to act as a mechanism to fine-tune mRNA regulation in early *Xenopus* development, and with Rkhd4, but not Rkhd1, will co-localize with both the hDcp1a decapping factor and Argonaute (Ago) proteins in processing bodies (P bodies), recently characterized as centers of mRNA turnover.

Synonyms:

MEX-3B; RKHD3; RNF195

Product images:


Western blot analysis of RKHD3 in mouse skeletal muscle tissue lysate with RKHD3 antibody at 1 ug/mL.



Immunofluorescence of RKHD3 in mouse skeletal muscle cells with RKHD3 antibody at 20 ug/mL.