

## Product datasheet for **TA320044**

### NLRC5 Rabbit Polyclonal Antibody

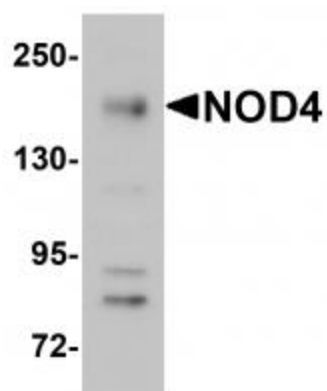
#### Product data:

Product Type:	Primary Antibodies
Applications:	IF, WB
Recommended Dilution:	WB: 1 ug/mL, ICC: 10 ug/mL, IF: 20 ug/mL
Reactivity:	Human, Mouse
Host:	Rabbit
Isotype:	IgG
Clonality:	Polyclonal
Immunogen:	NOD4 antibody was raised against an 18 amino acid synthetic peptide near the amino terminus of human NOD4.
Formulation:	NOD4 Antibody is supplied in PBS containing 0.02% sodium azide.
Concentration:	1 mg/ml
Purification:	NOD4 Antibody is affinity chromatography purified via peptide column.
Conjugation:	Unconjugated
Storage:	Store at -20°C as received.
Stability:	Stable for 12 months from date of receipt.
Gene Name:	NLR family, CARD domain containing 5
Database Link:	<a href="#">NP_115582</a> <a href="#">Entrez Gene 434341 Mouse</a> <a href="#">Entrez Gene 84166 Human</a> <a href="#">Q86WI3</a>
Background:	NOD4 Antibody: NOD4 is a member of the NOD (nucleotide-binding oligomerization domain) family, a group of proteins that are involved in innate immune defense. NOD4 contains a CARD-like domain, a central NOD domain and a large LRR region. NOD4, an IFN-gamma-inducible nuclear protein, plays a role in homeostatic control of innate immunity and in antiviral defense mechanisms. As a key negative regulator of NF-κB and type I interferon signaling, NOD4 may be a useful target for manipulating immune responses against infectious or inflammation-associated diseases, including cancer.
Synonyms:	CLR16.1; NOD4; NOD27

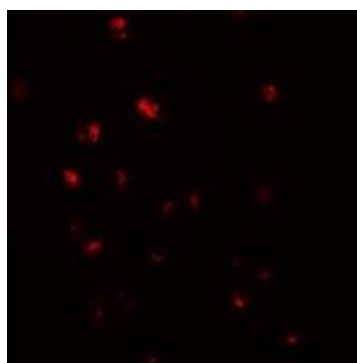


[View online »](#)

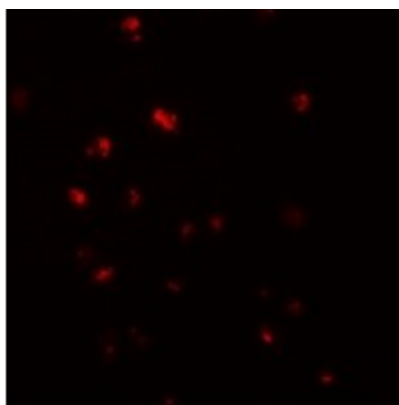
## Product images:



Western blot analysis of NOD4 in EL4 cell lysate with NOD4 antibody at 1 ug/mL.



Immunocytochemistry of NOD4 in HeLa cells with NOD4 antibody at 10 ug/mL.



Immunofluorescence of NOD4 in HeLa cells with NOD4 antibody at 20 ug/mL.